

## Participating Tribes

Currently, six Tribes have chosen to participate and will receive advance notification of SNF shipments, none of them are in the Midwest.

- Cabazon Band of Mission Indians (CA)
- Morongo Band of Mission Indians (CA)
- Navajo Nation of Indians (AZ)
- Nez Perce Tribe (ID)
- Seneca Nation of Indians (NY)
- The Shoshone-Bannock Tribes (ID)

There are 14 Tribes in the Midwest with reservation and trust land within a 50-mile radius of nuclear power plants. It is more than likely that SNF shipments will travel through or near several of these lands.

### NATIVE AMERICAN RESERVATIONS, TRUST LANDS, WITHIN 50-MILE RADIUS OF NUCLEAR POWER PLANTS

State	Name of Plant	Tribe with nearby reservation/trust land
Iowa	Duane Arnold	Sac & Fox/Meskwiki
Michigan	Big Rock Point*	Grand Traverse Band of Ottawa & Chippewa Indians Little Traverse Bay Bands of Odawa Indians
	D.C. Cook	Pokagon
	Palisades	Pokagon Match-E-Be-Nash-She-Wish Band of Pottawatomi
Minnesota	Monticello	Mille Lacs Shakopee
	Prairie Island	Prairie Island Shakopee
Nebraska	Cooper	Iowa Kickapoo Sac & Fox
	Fort Calhoun*	Omaha Winnebago
Wisconsin	Kewaunee*	Oneida
	Point Beach	Oneida

\* Plants are decommissioned but spent nuclear fuel remains on site,  
Sources U.S Nuclear Regulatory Commission and CSG Midwest research

## About

This brochure was created by the Regional Tribal Engagement (RTE) Work Group of the Midwestern Radioactive Materials Transportation Committee (MRMTC). Members of the RTE Work Group include Michael Bradley of the Pokagon Band of Potawatomi Nation, Sarah Chaney of Indiana, Scott Doig of the Bureau of Indian Affairs, Greg Gothard of Michigan, Tim Grant of the Omaha Tribe of Nebraska, Aaron Kallunki of Minnesota, Dan King of the Oneida Nation, Tansey Moore of the National Conference of State Legislators, and Heather Westra of the Prairie Island Indian Community. The MRMTC is staffed by the Council of State Governments-Midwest.



## MIDWEST

For more information,  
contact Mitch Arvidson  
(630) 925-1922  
marvidson@csrg.org  
701 East 22nd Street, Suite 110  
Lombard, IL 60148

# WHY TRIBES SHOULD PARTICIPATE IN THE U.S. NUCLEAR REGULATORY COMMISSION'S (NRC) TRIBAL ADVANCE NOTIFICATION

*Midwestern Radioactive Materials  
Transportation Committee*



Spent nuclear fuel dry storage casks at Prairie Island Nuclear Generating Station near the Prairie Island Indian Community (Photo courtesy of Mitch Arvidson)

# What is Advance Notification

For many years and according to federal law, entities that are licensed by the NRC to transport spent nuclear fuel (SNF) have been required to provide advance notification to the NRC and the governor of a State, or the governor's designee, of the shipment of SNF through or across the boundary of the State, before the transport, or delivery to a carrier for transport of the SNF outside the licensee's facility or other place of storage.

Recognizing the sovereignty of Tribal governments and their responsibility to protect public health and safety within their jurisdictions, the NRC finally extended this requirement to Tribes on June 11, 2013. However, unlike States, Tribes must opt-in to participate and receive these notifications.

The notifications include information about the schedule and route of the shipments and are therefore considered Safeguards Information (SGI). Tribal governments must protect that information and Tribal officials designated to receive the notifications must be trained in NRC's regulations for handling, storing, and protecting SGI.

Participating in advance notification allows Tribes to understand when, where, and how a shipment of SNF will pass within or across their reservation. This understanding can lead to better preparation, training, and planning.

## How to Opt-In

1. Notify the NRC that the Tribe has decided to participate in the program.
2. Designate an official and an alternate to receive the notifications and provide contact information for those officials and an emergency response official to the NRC.
3. Develop a program for protecting SGI.
4. Certify that the designated officials have received the required NRC training in how to handle and protect SGI.
5. Review a map provided by the NRC of the Tribe's reservation(s), showing main roads, railroads and waterways, and verify its accuracy.

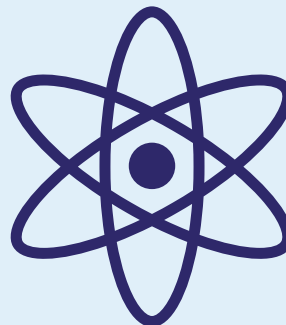
### **NRC Contact:**

Branch Chief, Tribal Liaison Program

**Phone:** (301) 415-7000

**Email:** Tribal\_Outreach.Resource@nrc.gov

**Website:** <https://www.nrc.gov/about-nrc/state-tribal/tribal-advance-notification.html>



## Contents of Notifications

- The notification must be in writing, addressed to the Tribal official or the Tribal official's designee
- If sent by U.S. Mail, the notification must be postmarked at least 10 days in advance of the scheduled shipment. If delivered by other means, the notification must arrive by other means
- **The notification must include**
  - Name, address and telephone number of the shipper, carrier, and receiver of the shipment, with the NRC license number of the shipper and receiver
  - A description of the shipment as specified in U.S. Department of Transportation (DOT) regulations
  - A list of the routes to be used within the Tribe's lands
- **In a separate enclosure, the licensee must include**
  - Estimated date and time of departure from the point of origin
  - Estimated date and time of entry into the Tribe's lands
  - Estimated date and time of arrival at destination
- **Tribal officials receiving are required to protect this information until at least 10 days after shipment enters their reservation**