

WIPP Update

Council of State Governments Mid-Western Region

Omaha, Nebraska
November 14-15, 2012

William B. Mackie
Institutional Affairs Manager
U.S. Department of Energy
Carlsbad Field Office



Carlsbad Field Office – WIPP Team



U.S. Department of Energy
Carlsbad Field Office

- Leads the Transuranic Waste Program
- Science Program



Nuclear Waste Partnership LLC
A URS-led partnership with BSW and AREVA

- Manages and operates the WIPP facility
- Manages transportation logistics and packages
- Manages waste retrieval, characterization and certification



Sandia National Laboratories

- Scientific advisor for repository recertification



Los Alamos National Laboratory

- Scientific advisor for waste characterization
- Mobile loading



CBFO Technical Assistance Contractor

- Technical and Quality Assurance support for the Carlsbad Field Office



Ma-Chis Lower Creek Indian Tribe Enterprises, Inc. – TRANSCOM

- Satellite Tracking



Specialty Transportation, Inc.

CAST Specialty Transportation

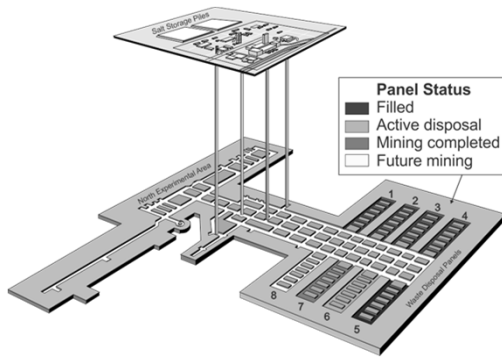
- Transportation carrier



Visionary Solutions

- Transportation carrier

Facility Status

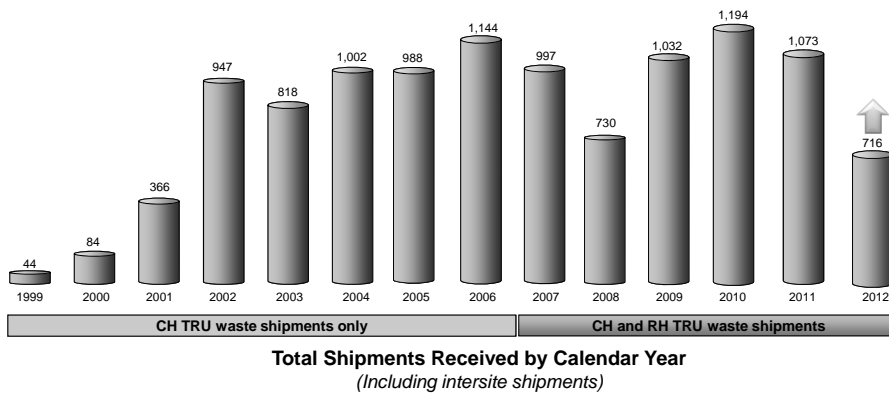


- Underground excavation began 30 years ago (1982)
 - More than 1.75 million tons of salt mined (13 miles of drifts)
- Safe operations began 13.5 years ago (1999)
 - More than 162,000 waste containers underground
 - 52 percent of the WIPP volume capacity remains
- Salt Defense Disposal Investigation (SDDI)

3

Shipments Summary

Shipments received at WIPP as of Nov. 5: 10,960
 Contact-handled: 10,349
 Remote-handled: 611

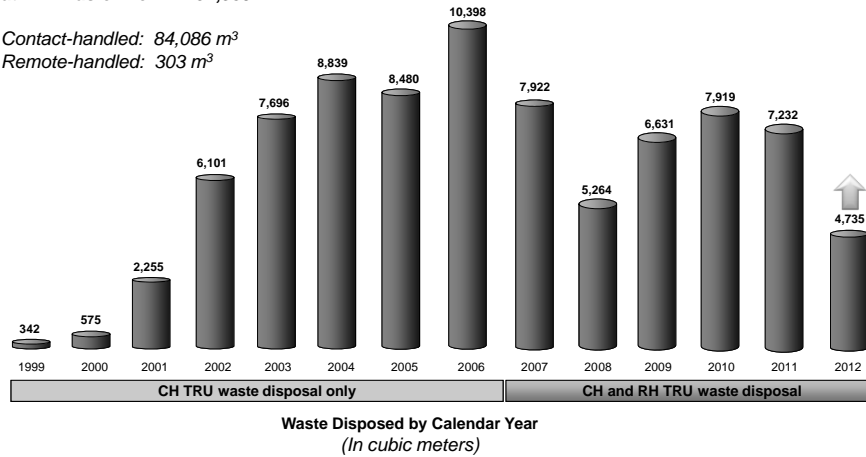


4

Disposal Summary

Volume of waste disposed
at WIPP as of Nov. 4: 84,389 m³

Contact-handled: 84,086 m³
Remote-handled: 303 m³



5

Shipments Received (as of November 5, 2012)

Site	Shipments	Loaded Miles
Argonne National Laboratory	151	259,421
Bettis Atomic Power Laboratory	5	10,955
GE Vallecitos Nuclear Center	32	44,800
Idaho National Laboratory	5,393	7,504,272
Los Alamos National Laboratory	1,111	379,962
Lawrence Livermore National Laboratory	18	24,804
Nevada Nuclear Security Site	48	57,312
Oak Ridge National Laboratory	131	175,933
Rocky Flats Environmental Technology Site	2,045	1,446,444
Hanford Site	572	1,034,176
Sandia National Laboratory	8	2,200
Savannah River Site	1,445	2,179,892
Total To WIPP	10,959	13,120,171

6

Planned Shipping Activities

<u>Site</u>	<u>FY-2013</u>
Argonne National Laboratory	14
Idaho National Laboratory	340
Los Alamos National Laboratory	220
Savannah River Site	148
Totals	722

*Projections based on a reduced funding scenario of \$198 million with a six month continuing resolution.

7

Carrier Audits (Calendar Year 2012)

- Carlsbad Field Office Surveillance Audits
 - Cast Specialty Transportation, Inc. - conducted on March 6, 2012 - No Findings
 - Visionary Solutions, LLC - conducted on March 20, 2012 - No Findings

Lessons Learned – None
- State Contract Carrier Reviews
 - Cast Specialty Transportation, Inc. Conducted by Colorado State Patrol on April 11, 2012 - No Findings
 - Visionary Solutions, LLC – conducted by Tennessee Highway Patrol on May 14, 2012 – No Findings

Lessons Learned - None
- Calendar Year 2013 Audits
 - Will be scheduled by Carlsbad Technical Assistance Contractor (CATC) for March/April 2013

8

TRU Transportation Incidents/Accidents (May 2012 through October 2012)

Year	Month	Day	Carrier	Shipment	Trailer	Tractor	Event type	Other info.
2012	5 (May)	3	VS	MTIN120106		V411	Tractor Replacement	Due to an engine coolant shutdown Issue with Unit V411 with empty shipment MTIN120106 we will be performing an en-route Tractor replacement. Unit V411 is in Moriarty NM, east of Albuquerque NM, the drivers will park the unit at the TA Truck stop in Moriarty NM, and wait on the replacement Unit V408 to arrive. This unit has already been dispatched and is en-route to Moriarty NM, estimated arrival time should be between 1300 to 1330. I have discussed the time frames with the Drivers and at this time we feel no need to request a 24 hour shipment delay. The drivers should still have plenty of time to make it the Idaho site and depart with the loaded shipment as scheduled.
2012	5 (May)	4	CAST	IN120106	345		Out of Service Violation	Out of service violation in Idaho on shipment IN120106 and Cast trailer #345. Out of service was noted as a brake pad touching the drum. Violation challenged due to the fact that the brake adjustment section of the inspection report shows all the brakes are well within the allowable limits. Challenge won.
2012	5 (May)	17	CAST	MTIN120120		C-26	Windshield	C-26 had a rock hit its windshield while in route to INL near Blackfoot, ID. The rock was thrown up by a passing dump truck. Windshield replaced.
2012	5 (May)	19		IN120125			Unauthorized shipment dispatch	INL/AMWTP shipping personnel released shipment before receiving authorization from WIPP CMR.
2012	6 (Jun)	10	VS					Failure to stop at Vaughn, NM weigh station signs posted directing CMV traffic into weigh station. Driver cited and subsequently went to court where charges were dropped.
2012	7 (Jul)	16	VS	IN120187		V01		24 hour shipment delay due to lack of inspection support after repairs. Downtime was 4 hours.
2012	7 (Jul)	19	CAST	MTIN120188		C-35	Check engine light	Check engine light came on in Pocatello, ID 6:00 a.m. Code was for diesel particulate filter. Repairs were made.
2012	8 (Aug)	23	VS	LA120139	308	V14	Tractor Breakdown	Tractor had turbo malfunction, tractor replaced.

TRU Transportation Incidents/Accidents (May 2012 through October 2012)

Year	Month	Day	Carrier	Shipment	Trailer	Tractor	Event type	Other info.
2012	8 (Aug)	28	CAST	SR312035	C28	C28	Mechanical Breakdown	C28 reported a tractor breakdown in Monroe LA caused by fuel/filter problem. Problem repaired and the shipment was back on the route.
2012	8 (Aug)	28	VS	IN120221	328	404	Tractor Breakdown	Shipment delay with Truck 404 and Trailer 328, was due to ABS sensor issue. A repair unit was dispatched to the Wyoming/ Colorado state line on I-25 where the ABS brake wheel sensor was replaced and the unit was placed back in service.
2012	9 (Sep)	7	VS	IN120225	330		Out of Service Violation	Out of Service violation in Idaho on trailer 330 due to a tie-down adjustment. The driver readjusted the tie-down to meet the specifications and was released.
2012	9 (Sep)	11	VS	IN 120229	379	V04	Shipment Delays	Shipment delays at two separate locations-truck 404 and trailer 379. The first was 2.0 hours due to a windshield replacement in Cheyenne WY. The second was 3.5 hours due to a tire blow-out on trailer 379 at Romeroville, NM.
2012	9 (Sep)	17	VS	IN120237	351	V25	Inspection Statements	Trailer 351 dropped onto the back tractor frame of V25. Both the drivers and the repair mechanic from Driscoll Truck Center have inspected the units and have found them to be in good condition. At this point the Idaho State Inspectors completed the Level VI inspection and passed both units.
2012	9	26	CAST	MTIN120244	356	C31	Tractor engine problems	Replacement tractor dispatched from Carlsbad Terminal.
2012	9	27	CAST	MTAER12030	RH006	N/A	Tire issue on trailer	Tread separation damaged fender and brackets.
2012	9 (Sep)	17	VS	in120237	351	V25	Trailer became disconnected while repositioning 5th wheel	Tractor and trailer were inspected by a mechanic from the Driscoll Truck Center and released.
2012	10 (Oct)	5	CAST	MTIN120255	N/A	C27	Tractor check engine light	Tractor replaced.
2012	10 (Oct)	8	VS		303		Inspection Violation	Trailer 303 violation under code 393.11 for inadequate reflective tape on the side of the trailer-with the trailer length =444" and it was stated that it only had 195" of tape applied. After reviewing the measurement it was found the trailer to have 256" of tape. Idaho state Police contacted. Outcome pending.
2012	10 (Oct)	17	CAST	MTSR312055		C35	Tractor mechanical issues	C-35 experienced a loss of power due to a fuel system problem. The tractor was taken to Birmingham, AL Kenworth for diagnostics and repair. Repairs made and tractor back on the road.

Carrier Safety Enhancements

- With the new Carrier Contracts, our Contract Carriers have added numerous safety enhancements

<u>Enhancement</u>	<u>Cast</u>	<u>Visionary Solutions</u>
Turn by Turn Navigation	yes	yes
Zonar Inspection System	yes	no
Lane Departure System	yes	yes
Anti-Collision System	no	yes
Event Logging Capability	yes	yes
Disc Brakes (traction control)	yes (front)	yes (front)
Panic Buttons	yes	yes
Bluetooth Capability	yes	yes

11

National Cleanup Status



As of June 7, 2012

12

Transportation Resources (includes subcontract support)



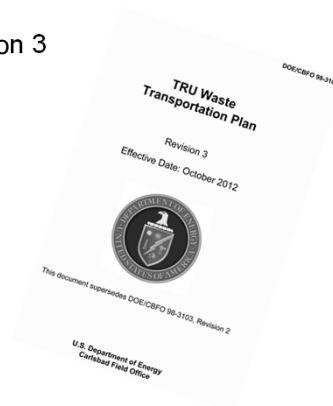
- Packages
 - 84 TRUPACT-IIIs
 - 15 HalfPACTs
 - 6 TRUPACT-IIIs
 - 12 RH-72Bs
- Trailers - 87
- Tractors - 28
- Mobile Loading Systems - 7
- Driver Teams
 - 56 drivers (22+ teams)
 - 10 terminal staff
- Mobile Loading Teams - 5



13

Plan Updates

- TRU Waste Transportation Plan, Revision 3
 - Issued October 12, 2012
- Strategic Communications Plan
 - Management review completed
 - Anticipate distribution by end of year



14

Community Relations

- WIPP Community Relations Plan
 - Available on WIPP Homepage (<http://www.wipp.energy.gov>)
- Eddy-Lea Energy Alliance
 - Partnership between Eddy County and Lea County
 - Exploring additional opportunities for the region
- Mayor's WIPP Task Force
 - Consists of appointed individuals
 - Purpose is to advise the mayor and promote the WIPP facility

15

WIPP Transportation Training

- Training Team Lead is Marsha Beekman, (575) 234-8487. Call Marsha to schedule training.
- Training completed (May through October 2012)
 - MERRTT 344
 - MERRTT T-t-T 14
 - Compressed MERRTT 175
 - Hospital Course 191
 - Dispatcher Course 28

Have MERRTT Train-the-Trainer scheduled for California Highway Patrol on February 11 & 12, 2014.
- Exercises
 - Currently planning a WIPPTREX in Monroe, Louisiana for April 17, 2013

16

Recent Infrastructure Improvements



- Roof repairs
- Electrical/electronic upgrades
- Underground ventilation fan refurbishment
- Obsolete mechanical equipment replacement
- Mechanical system upgrades
- LANL CCP support
- South Access Road reconstruction
- Fire suppression system upgrades

17

TRANSCOM

Classroom Training Schedule			
Location	Date	Morning	Afternoon
Salt Lake City, UT	November 27, 2012	Session 1	Session 2
Atlanta, GA	December 4, 2012	Session 1	Session 2
	December 5, 2012	Session 3 (if necessary)	
Albuquerque, NM	December 11, 2012	Session 1	Session 2
	December 12, 2012	Session 3 (if necessary)	
Carlsbad, NM	December 10, 2012	Session 1	Session 2
	December 11, 2012	If necessary	If necessary
	December 12, 2012	If necessary	Session 3
	December 13, 2012	If necessary	Session 4
	December 14, 2012	If necessary	If necessary

18

Questions?