

Association of State Rail Safety Managers Overview

Council of State Governments Midwest Radioactive Materials Transportation Committee Meeting

Cincinnati, OH
December 14, 2107



*Michael E. Stead
Rail Safety Program Administrator
Illinois Commerce Commission
President, ASRSM*



FRA State Rail Safety Participation Program

- Created by the Federal Rail Safety Act of 1970
- Provides a way for States to have a continuing role in rail safety regulation following the Federal preemption of independent State regulation
- Provides training & federal certification for all State inspectors
- Coordinates efforts between States and FRA Regions on activities that involve State inspectors or State involvement.
- Provides State-specific rail safety information to State agencies interested in the State participation program; assists State programs to promote rail safety efforts within their organizations; develops data and narrative support for State program budgets.
- Plans, schedules, and facilitates annual meetings of the ASRSM.



FRA State Rail Safety Participation Program

- Cooperative Agreement with the Federal Railroad Administration (FRA)
 - ✓ 49 CFR 212
- Federal Certification for State Inspectors
 - ✓ Hazardous Materials (HM)
 - ✓ Motive Power & Equipment (MPE)
 - ✓ Operating Practices (OP)
 - ✓ Signal & Train Control (STC)
 - ✓ Track (TRK)
 - ✓ Highway-Rail Grade Crossings (XING)



FRA State Rail Safety Participation Program

- A State agency must have ***State jurisdiction*** over the safety practices of the facilities, equipment, rolling stock, and operations of railroads.
- **State inspectors must be bona fide State employees:** State and Federal rail safety inspectors perform duties that are “inherently governmental.” Their work is intimately related to the public interest.
- **Experience requirements:** Inspector candidates must have at least 4 years of recent experience in their chosen technical disciplines. States can hire apprentice inspectors who possess a basic knowledge and understanding of a technical discipline.
- State agencies and FRA sign a **participation agreement**.
- **Over 180** Federally-Certified State Inspectors
- State Inspectors = **33% of National RR Inspection Force**

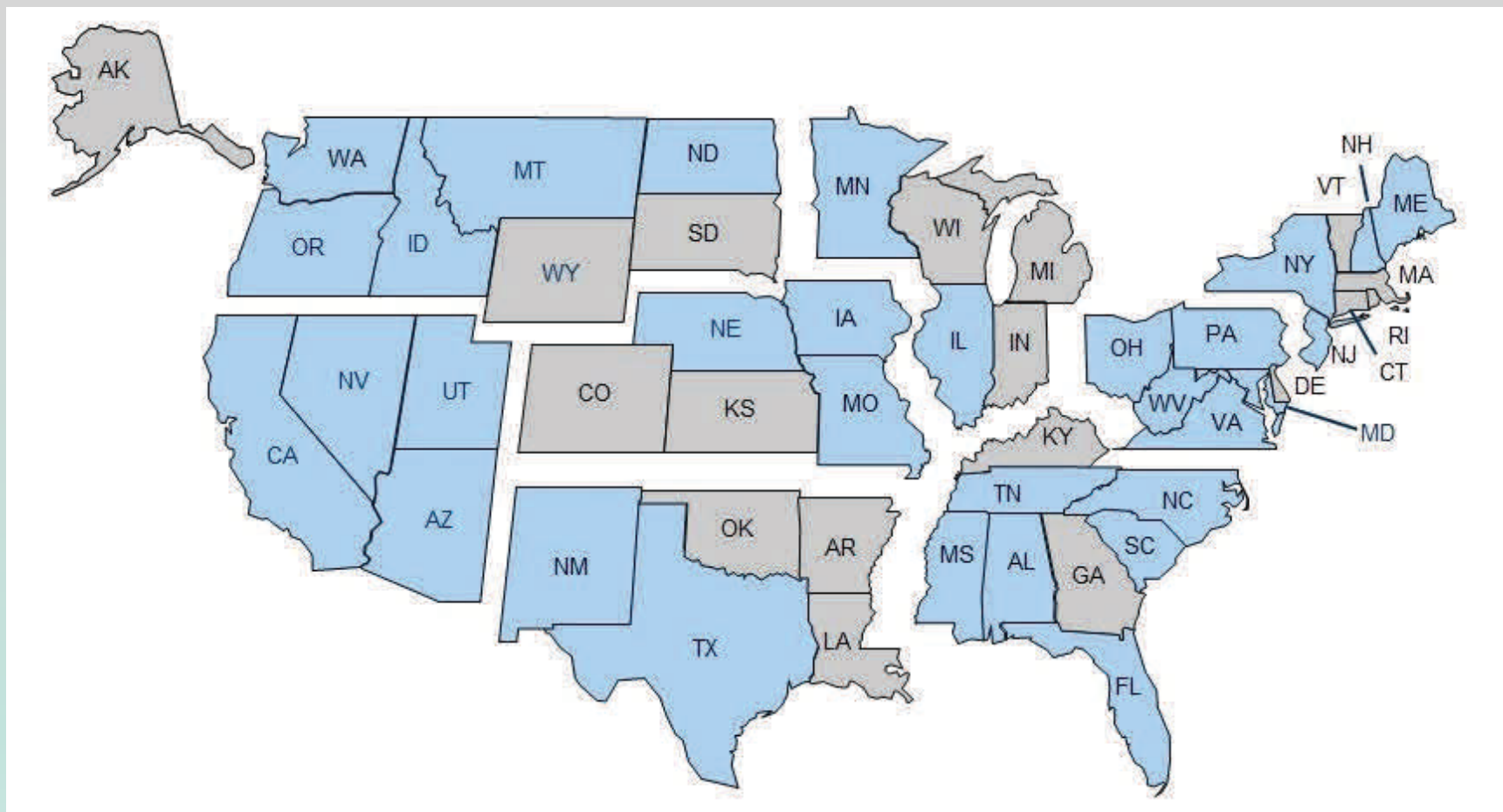


ASRSM Overview

- 31 States
- 14 Departments of Transportation
- 17 Regulatory Agencies
 - ✓ Public Utilities Commissions
 - ✓ Public Service Commissions
 - ✓ Commerce/Corporation Commissions
- Agreement between Member States and FRA



ASRSM States



✓ 2 New States Possible → GA & WI

ASRSM Leadership

- President
- Vice President
- Secretary
- Executive Committee
 - ✓ 8 Members
 - ✓ Represent States in each FRA Region
- 2-Year Terms



Railroad Safety Programs

➤ Railroad Route Mileage

- TX - 10,539
- IL - 7,119
- PA - 5,165
- OH - 4,903
- CA - 4,803
- ME - 1,091

➤ Railroad Companies

- PA - 72
- IL - 53
- TX - 52
- OH - 40
- CA - 26
- ME - 6



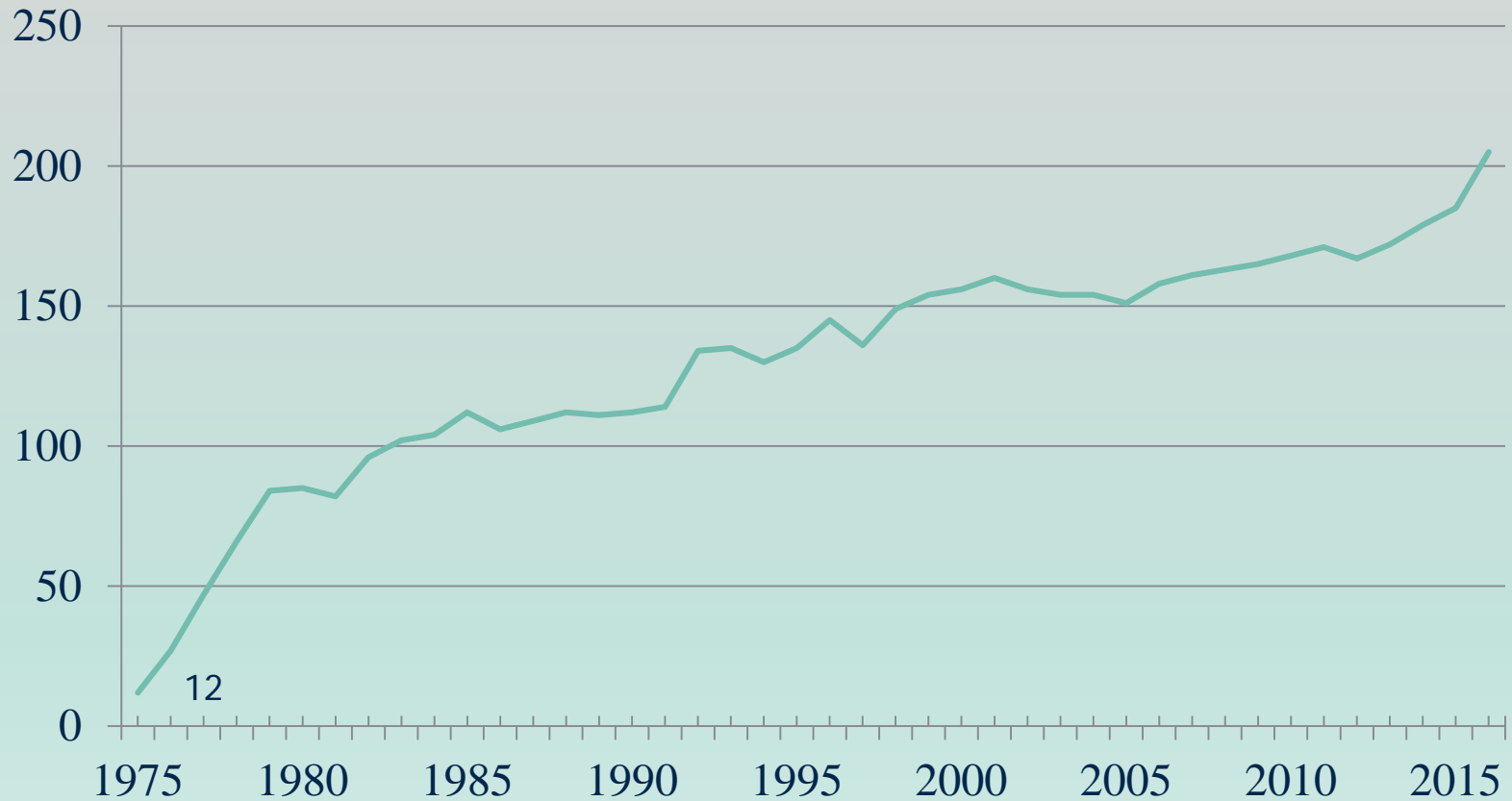
State Inspectors by Region

Region	Participating States by Region	State Inspectors by Region
1	4	17
2	5	41
3	6	25
4	2	12
5	2	17
6	3	7
7	4	45
8	4	15

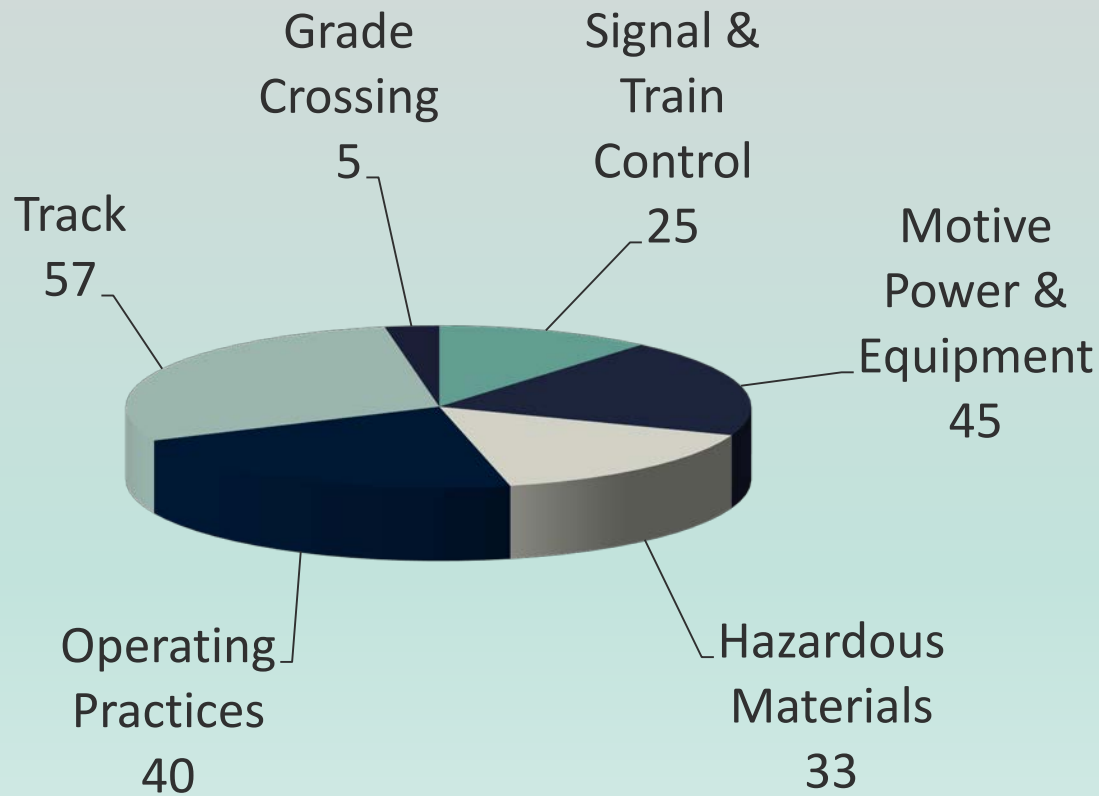
- CA – 51
- TX – 15
- OH – 13
- NY – 13
- ME - 1



ASRSM Growth



State Inspectors By Inspection Discipline



Public Safety is the #1 Priority



ASRSM Rail Safety Inspections

- Inspect Rail Facilities for Compliance with Federal Regulations:
 - ✓ Hazardous Materials (HM)
 - Inspect Rail Cars
 - Inspect Shipper Facilities
 - ✓ Motive Power & Equipment (MPE)
 - Locomotive and Rail Car Inspections
 - ✓ Operating Practices (OP)
 - Monitor/Inspect RR Operations
 - Roadway Worker Safety Compliance
 - Drug & Alcohol Compliance



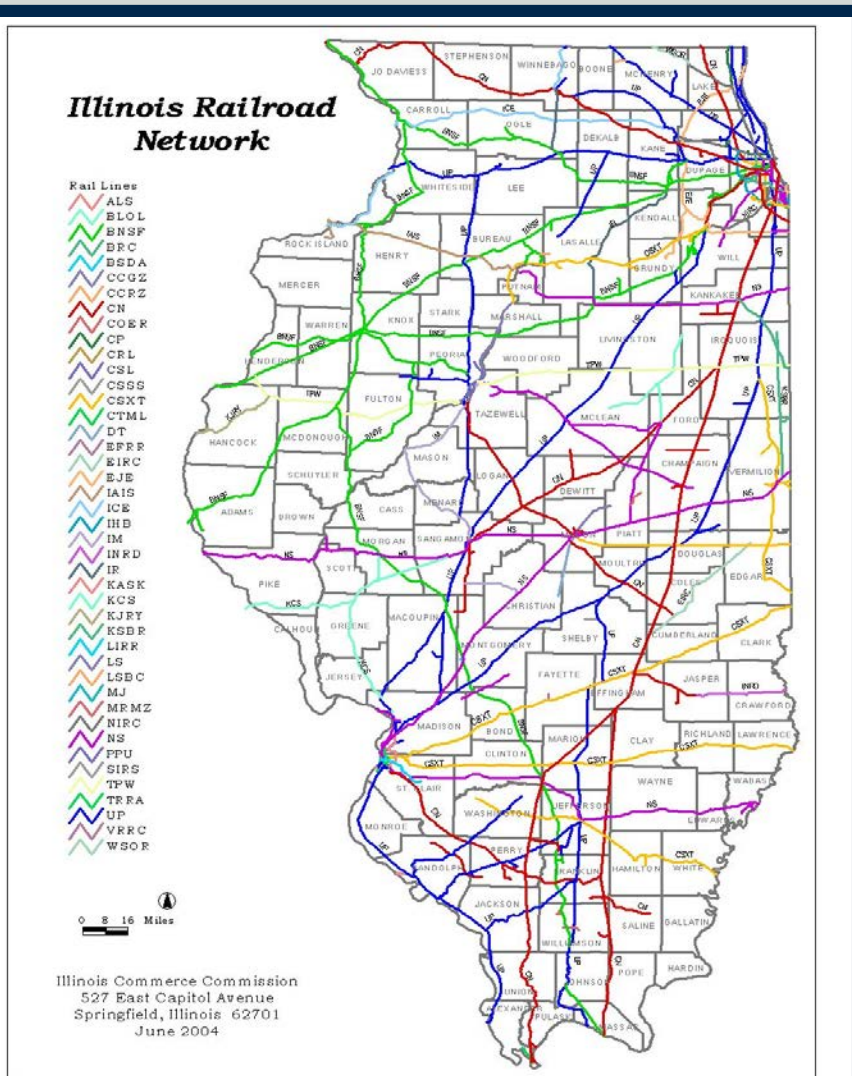
ASRSM Rail Safety Inspections (Cont'd.)

- ✓ Signal & Train Control (STC)
 - Field Inspection of Railroad Train Control Systems
 - Field Inspection of Existing Automatic Crossing Warning Systems
 - Field Inspection of New Automatic Flasher & Gate Installations
 - Field Inspection of Positive Train Control (PTC) Systems

- ✓ Track (TRK)
 - Railroad Workplace Safety
 - Roadway Worker Protection
 - Roadway Maintenance Machines
 - Communication Requirements for Roadway Workers
 - Employee Facilities (State)
 - Employee Walkways in Yards (State)



Illinois - High Density Railroad Traffic



- Nation's Largest Rail Hub (Chicago)
- 7,400 miles of track (2nd largest rail system in U.S.)
- 53 Operating Railroads
- 1500 Trains/Day
- 7,600+ public highway-rail grade crossings (2nd most in U.S.)
- 500 Million Tons (1 Trillion Pounds) of Freight Move on IL RRs each Year (Most of any State)
- 2nd Largest Number of Hazardous Materials Shipments by Rail in U.S. (20 Million Tons/Yr)
- Thruway for Radioactive Waste & Spent Nuclear Fuel Shipments

Rail Safety Inspections - *Track*

- Annually check all main line, siding and yard tracks
- Inspections are conducted by walking track; Hi-rail Vehicles
- Deviations from the Federal Standards result in RRs cited for defects or violations

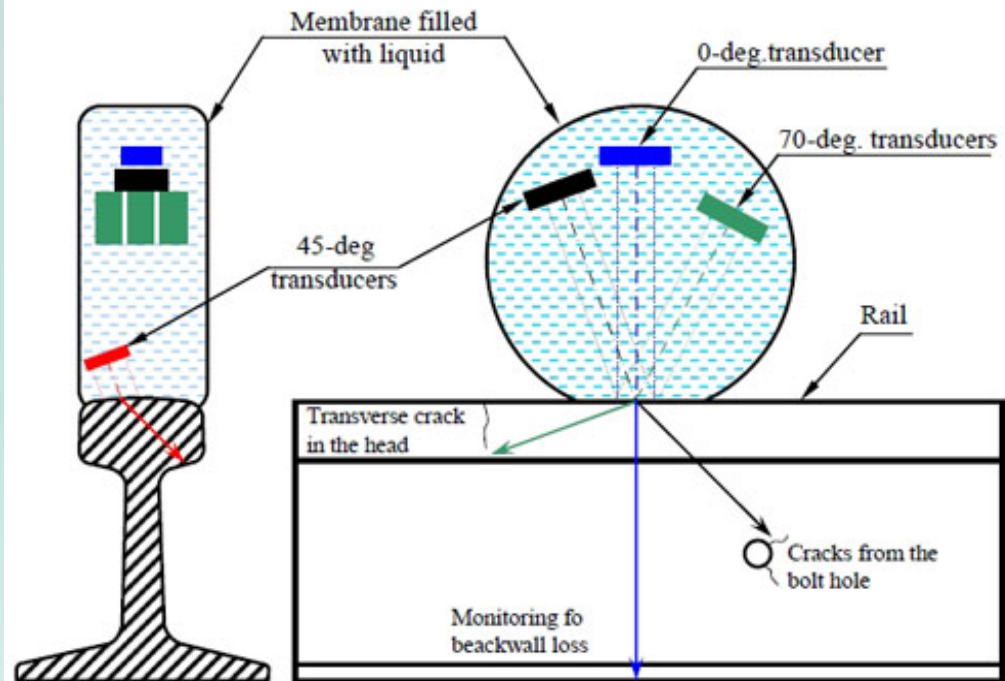


Track Safety Assurance & Compliance

- Federal Track Safety Standards (49 CFR 213)
 - ✓ Rail
 - ✓ Ballast / Drainage
 - ✓ Crossties
 - ✓ Alignment
 - ✓ Gauge
 - ✓ Crosslevel
 - ✓ Vegetation
 - ✓ Switches
 - ✓ Frogs



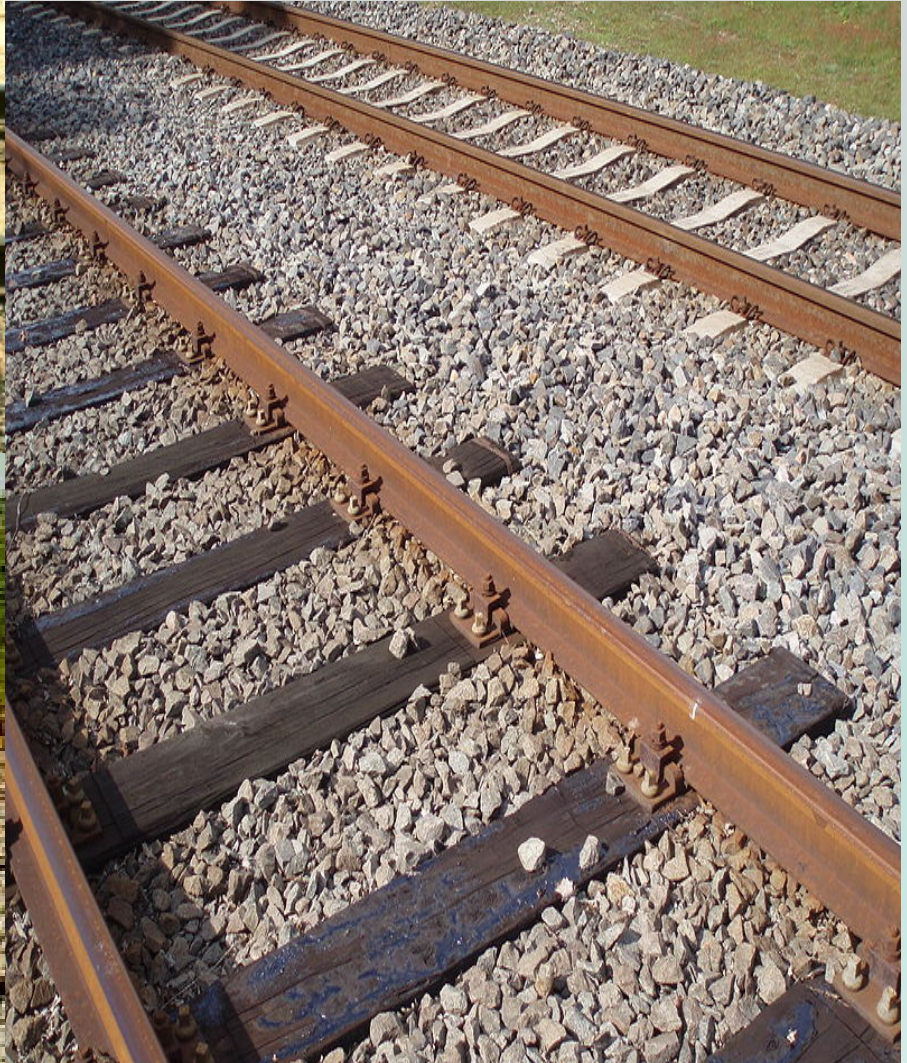
Rail



Ballast / Drainage



Crossties



Alignment



© John Combs



Gauge

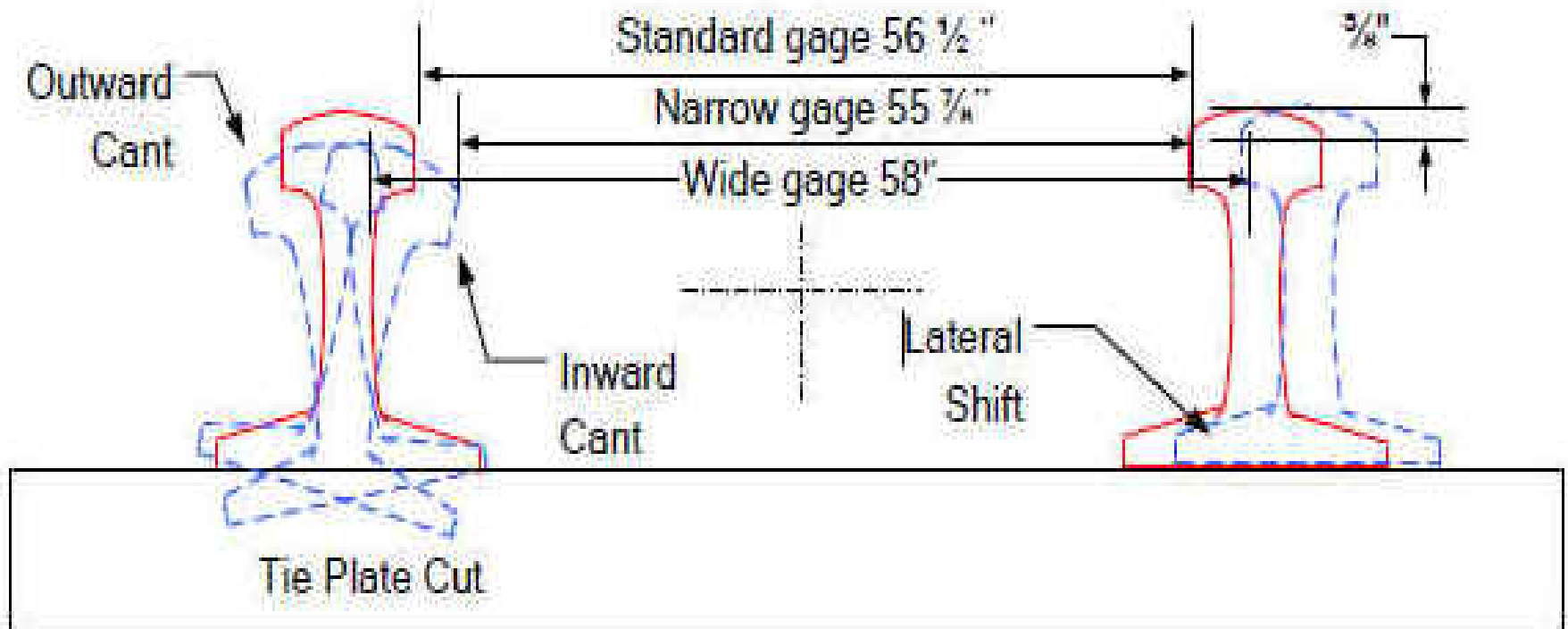
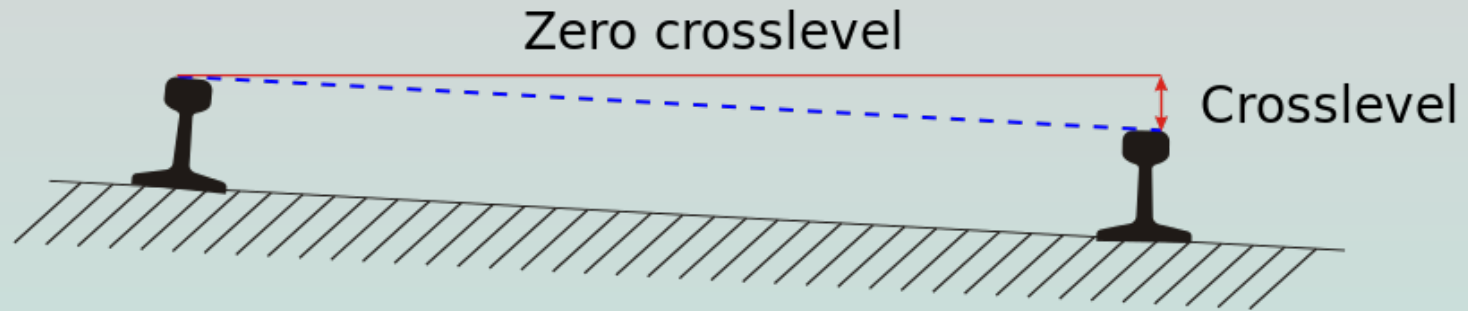


Figure 4

Crosslevel



- Difference in elevation (height) between the top surface of the two rails at any point of railroad track.
- **Zero Crosslevel** (no difference in elevation of both rails) is desired in tangent track.
- For curved track, the difference in elevation is referred to as **superelevation**.

Vegetation



Switches/Frogs



➤ Switch (Turnout) - mechanical installation enabling trains to be guided from one track to another.

➤ Frog - The crossing point of two rails

Rail Accident Investigations



NTSB Investigations:

- NTSB is the Lead Agency
- FRA & State Inspectors Assist as Directed by NTSB

FRA Investigations:

- State Inspectors Assist as Directed by FRA

State Investigations:

- Assigned by State Rail Manager

QUESTIONS??

Michael E. Stead

Rail Safety Program Administrator

Illinois Commerce Commission

527 E. Capitol Avenue

Springfield, IL 62701

(217) 557-1285

mike.stead@illinois.gov

www.icc.illinois.gov

