

SAFE STRONG SUPPORTIVE

CSG MIDWESTERN LEGISLATIVE CONFERENCE HEALTH AND HUMAN SERVICES COMMITTEE

How you can influence improved performance by your child protection agency

David Sanders
Executive Vice President, Systems Improvement
July 9, 2023

- How many of you serve on committees that have jurisdiction over child protection services?
- How many of you feel your state's child protection agency is performing well?
- If your agency isn't performing well, how many feel your agency is improving?
- How many of you meet with your child protection agency leadership outside of hearings?
- What's an example of legislative action that you have directly taken that you see as promising or successful?

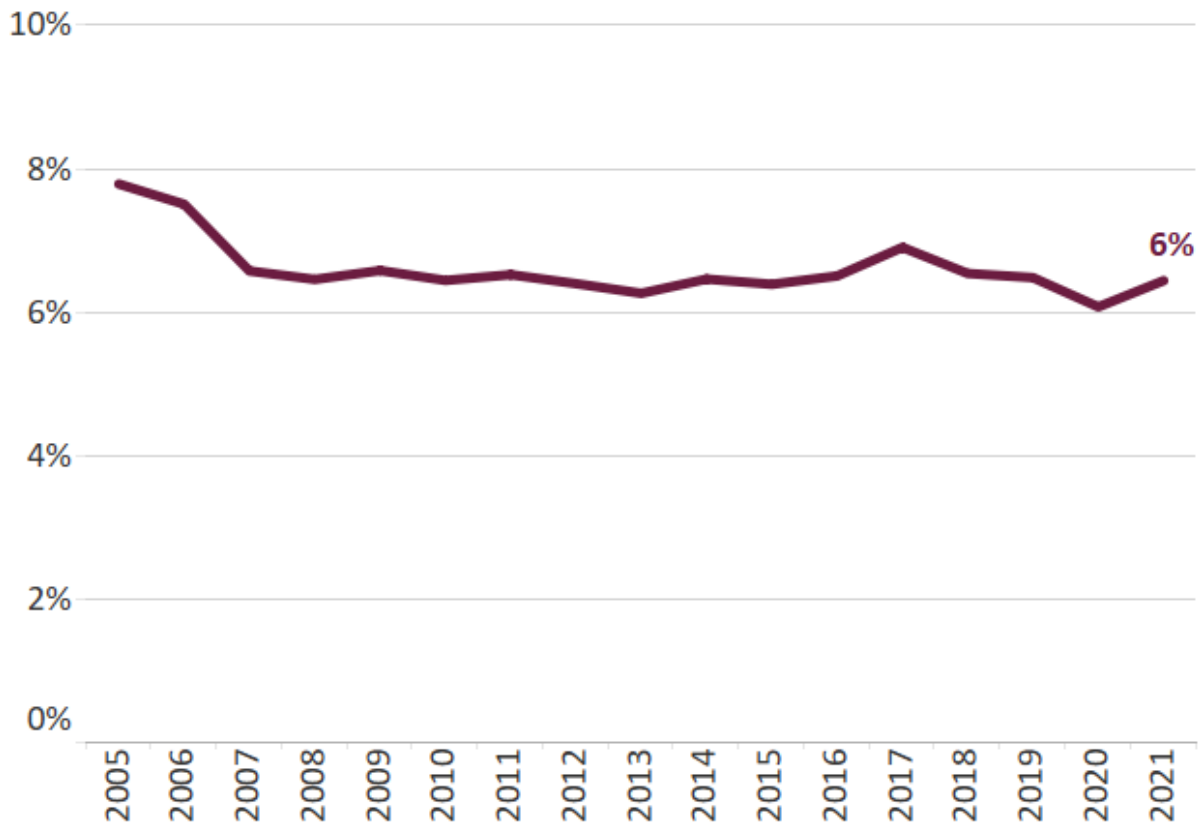
What is the public concerned about?

- Once children are brought to the agency's attention, they should be free from harm
- Children shouldn't languish in care

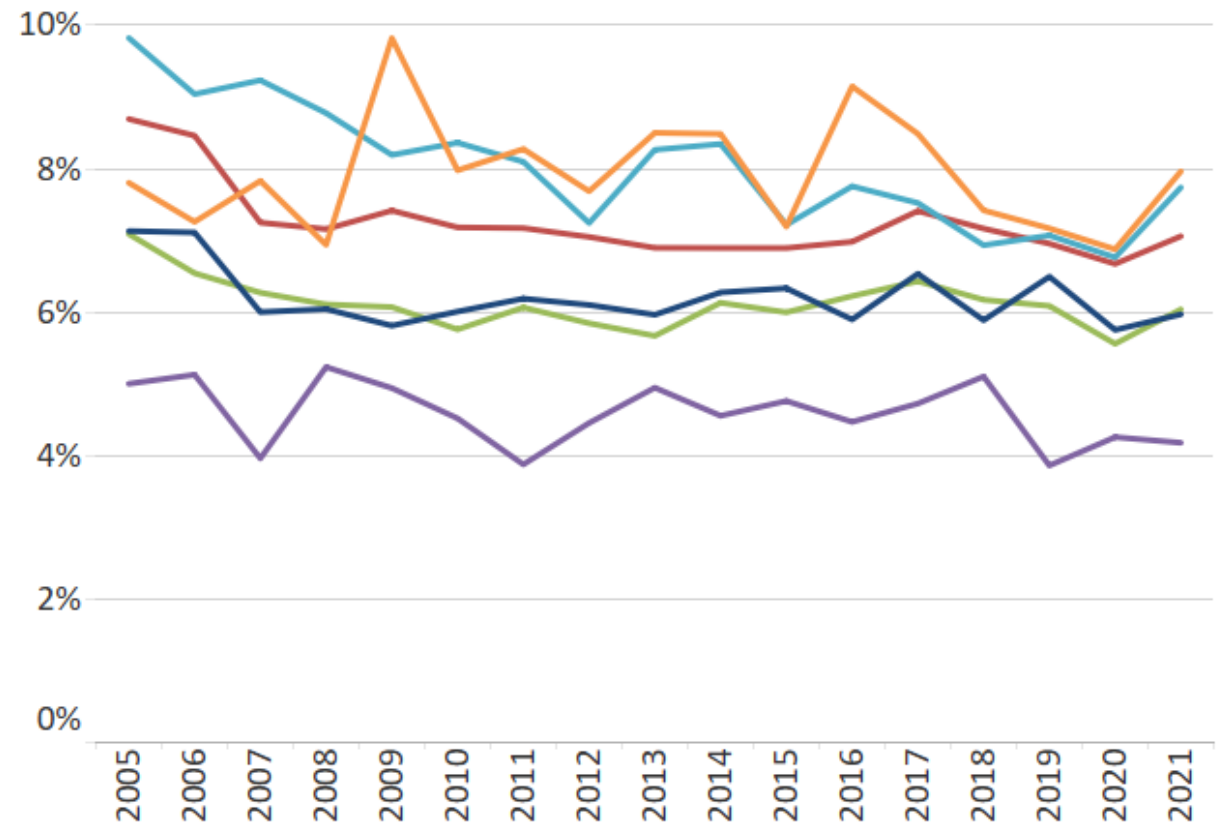
Maltreatment Recurrence | National

- American Indian/Alaska Native
- Asian/Pacific Islander
- Black/African American
- Latinx
- Multi-Racial
- White

Are children experiencing repeat maltreatment within 6 months?



by race/ethnic group

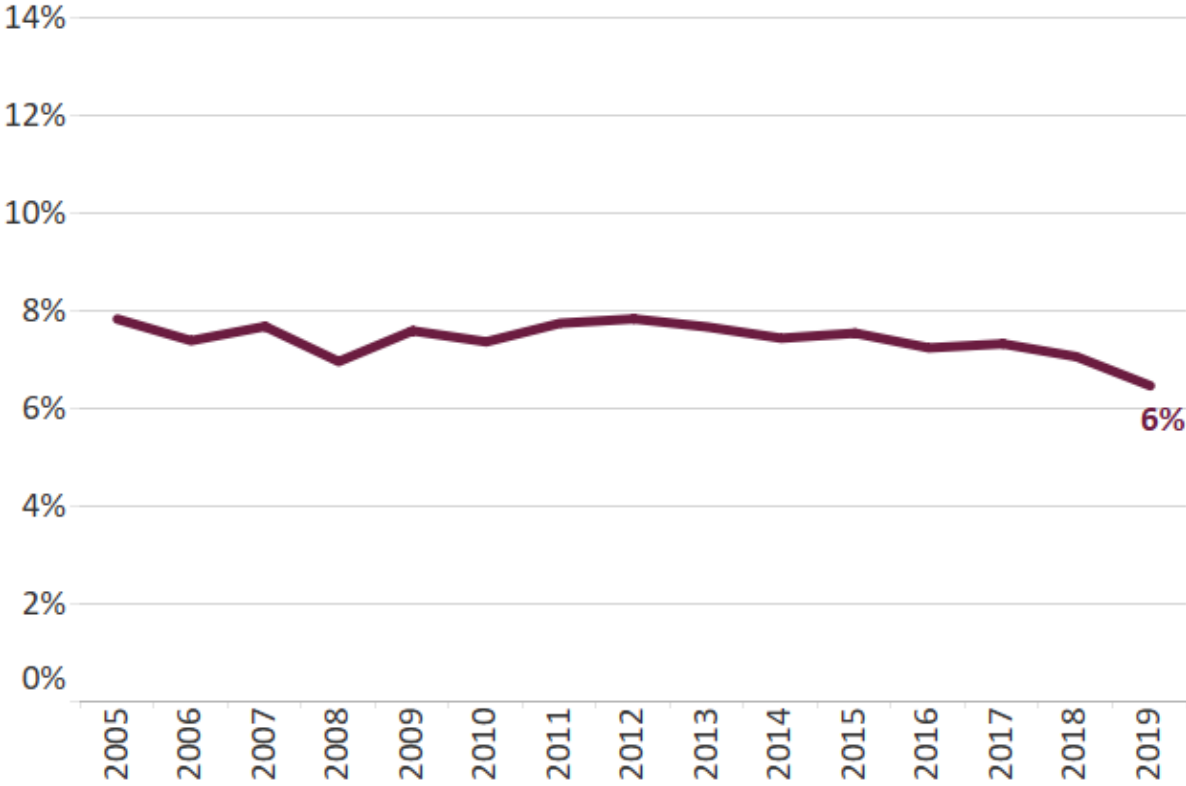


Source: Publicly obtained NCANDS files from NDACAN (children/youth < age 18; federal fiscal year ending 09/30)

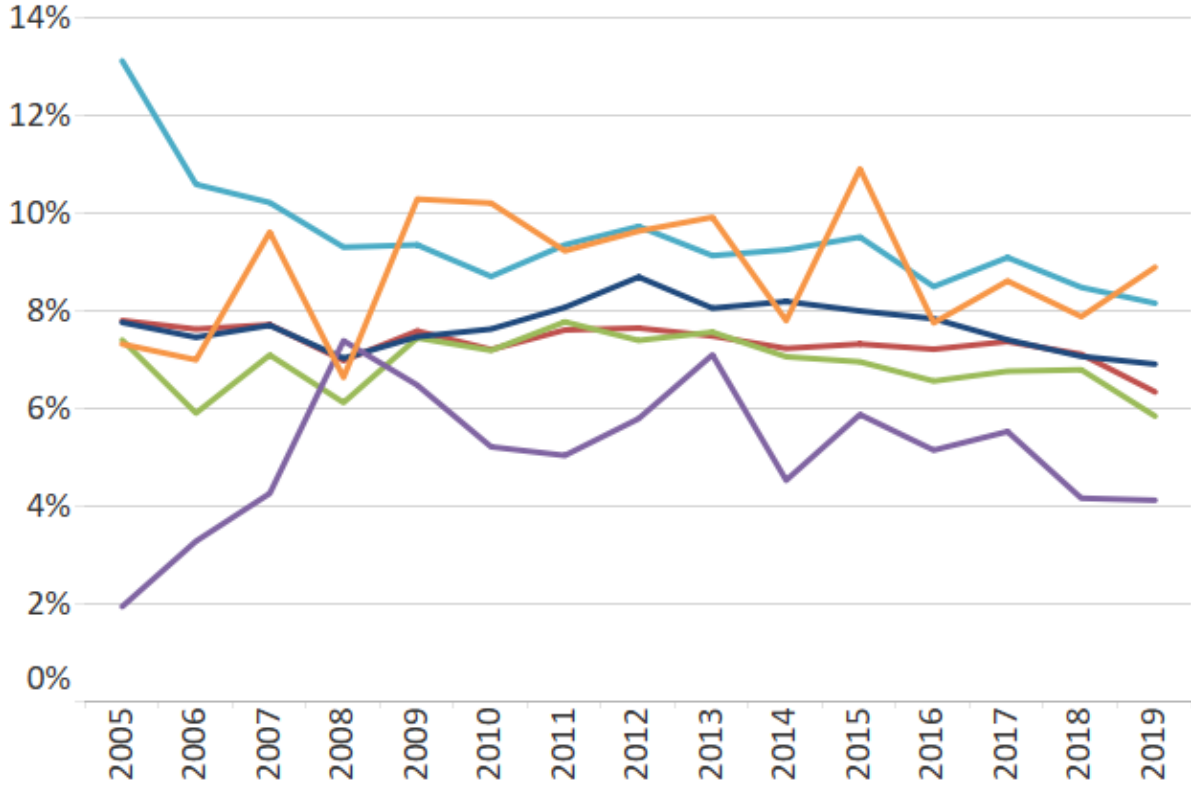
Re-entry into Care | National

- American Indian/Alaska Native
- Asian/Pacific Islander
- Black/African American
- Latinx
- Multi-Racial
- White

Are children re-entering care within 12 months after achieving permanency?



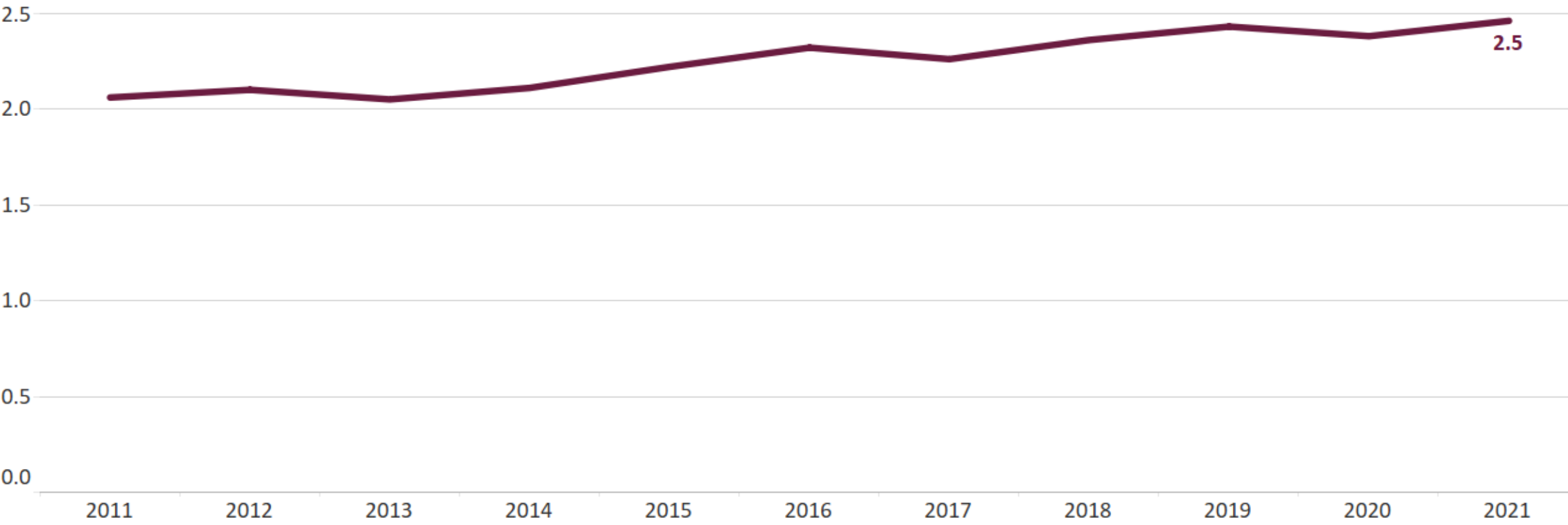
by race/ethnic group



Source: Publicly obtained AFCARS files from NDACAN (children/youth < age 18; federal fiscal year ending 09/30)

Child Maltreatment Fatalities | National

Is the system able to protect children from child maltreatment death?
(per 100,000 children in the population)

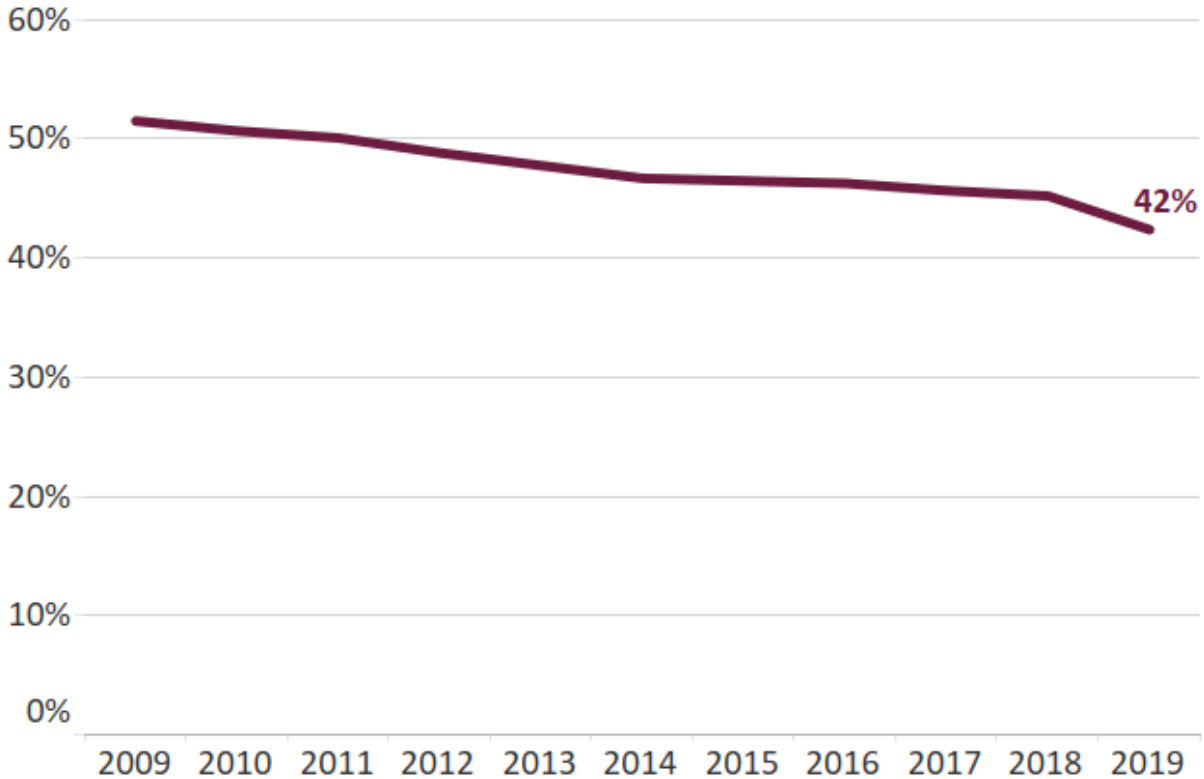


Source: 2021 Child Maltreatment Report
(children/youth < age 18; federal fiscal year ending 09/30; data cannot be disaggregated by race/ethnic group)

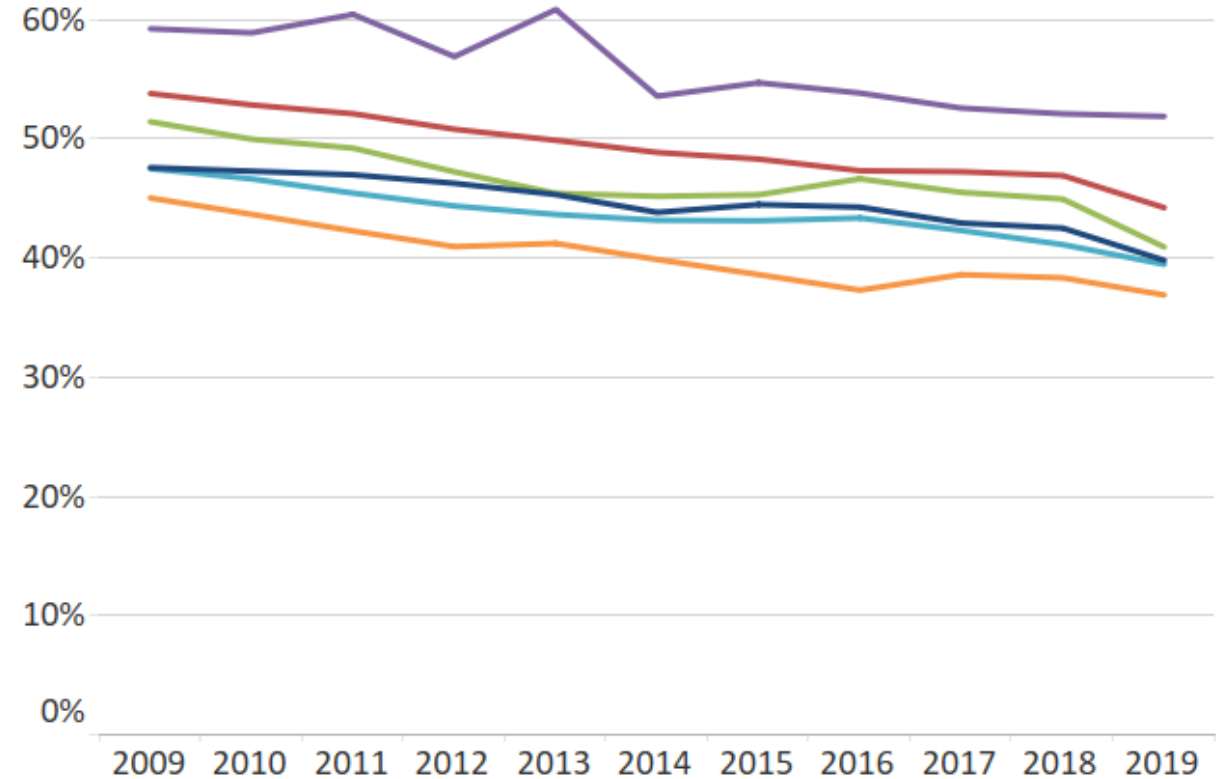
Permanency within 2 Years | National

- American Indian/Alaska Native
- Asian/Pacific Islander
- Black/African American
- Latinx
- Multi-Racial
- White

Are children achieving timely permanency?



by race/ethnic group

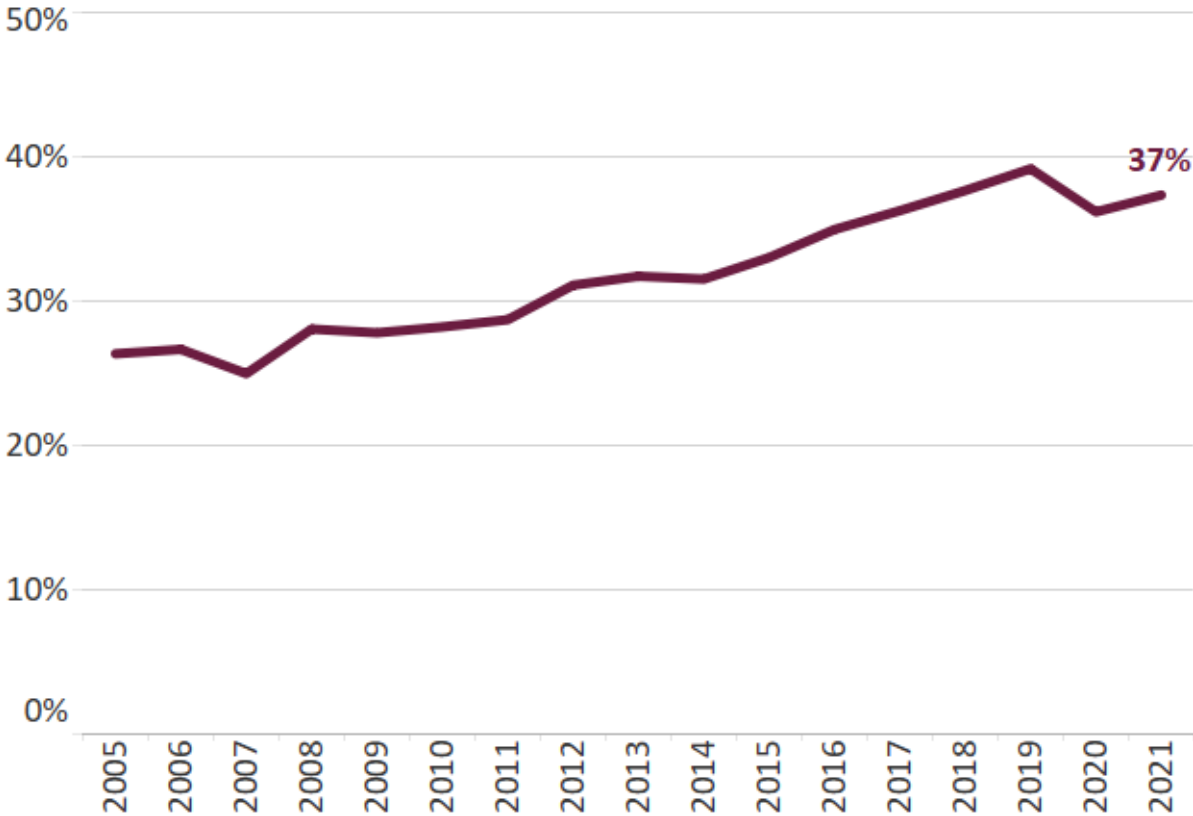


Source: Publicly obtained AFCARS files from NDACAN (children/youth < age 18; federal fiscal year ending 09/30)

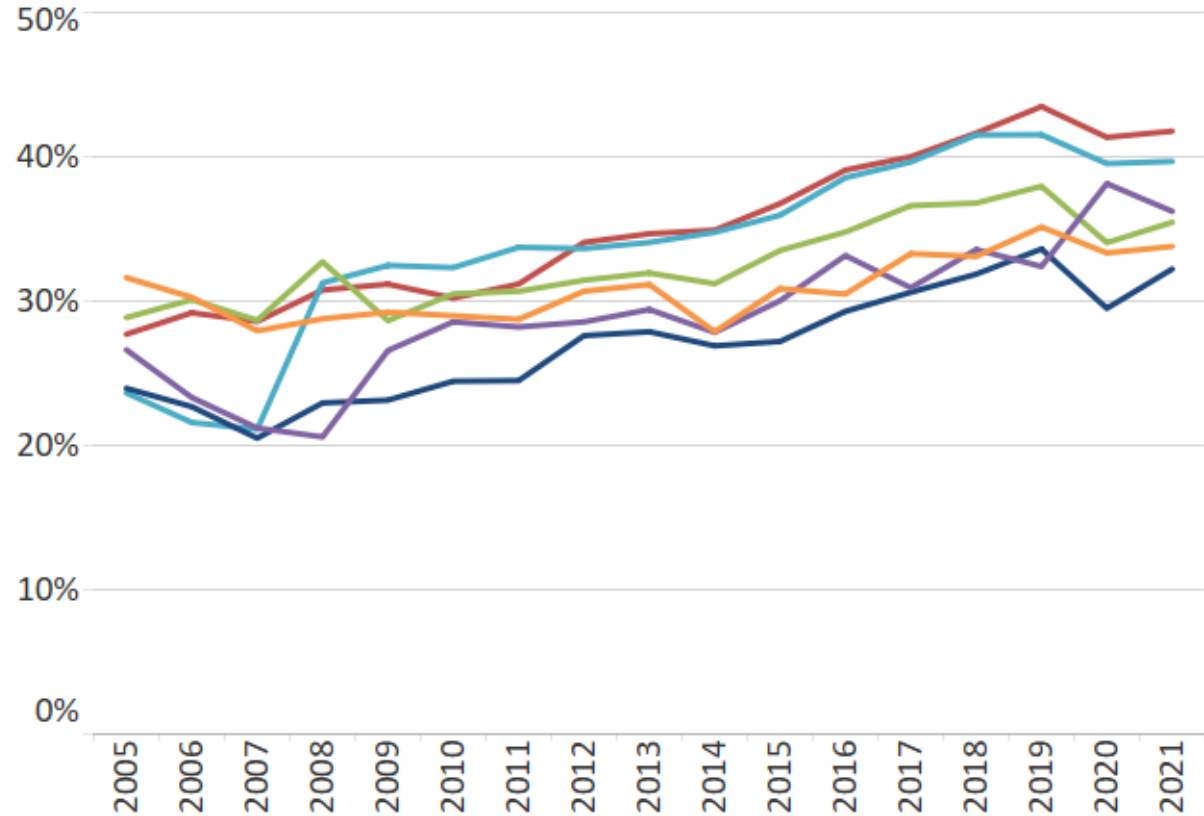
Permanency for Longstayers | National

- American Indian/Alaska Native
- Asian/Pacific Islander
- Black/African American
- Latinx
- Multi-Racial
- White

Are children in care 2+ years able to achieve permanency within the next 12 months?



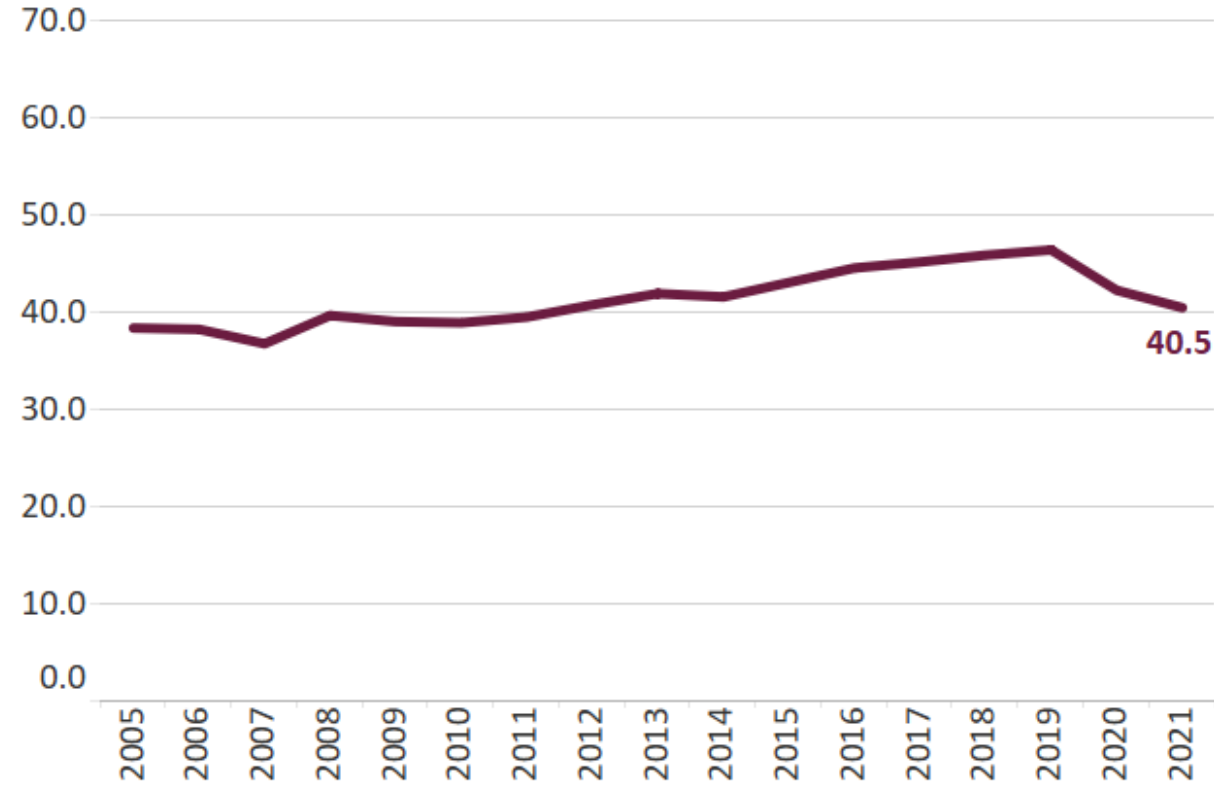
by race/ethnic group



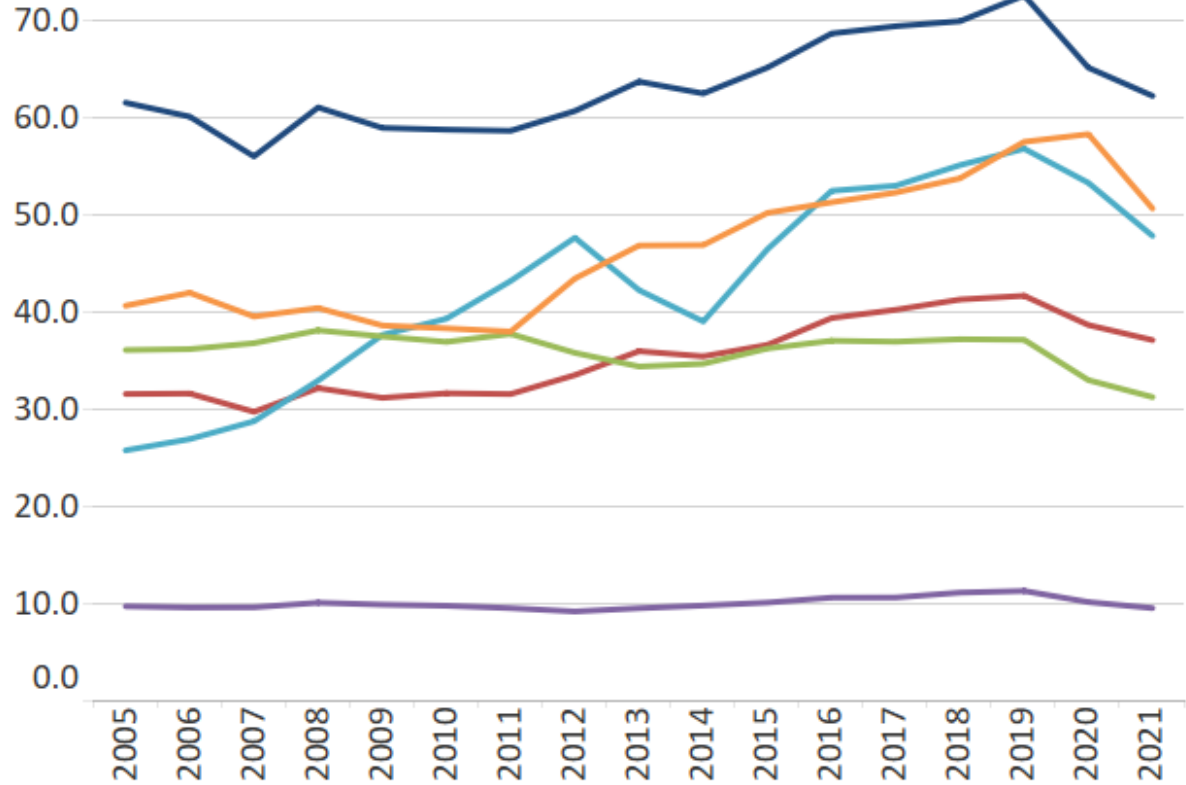
Source: Publicly obtained AFCARS files from NDACAN (children/youth < age 18; federal fiscal year ending 09/30)

Rate Screened In | National

How many children are being screened in for investigations?
(per 1,000 children in the population)



by race/ethnic group

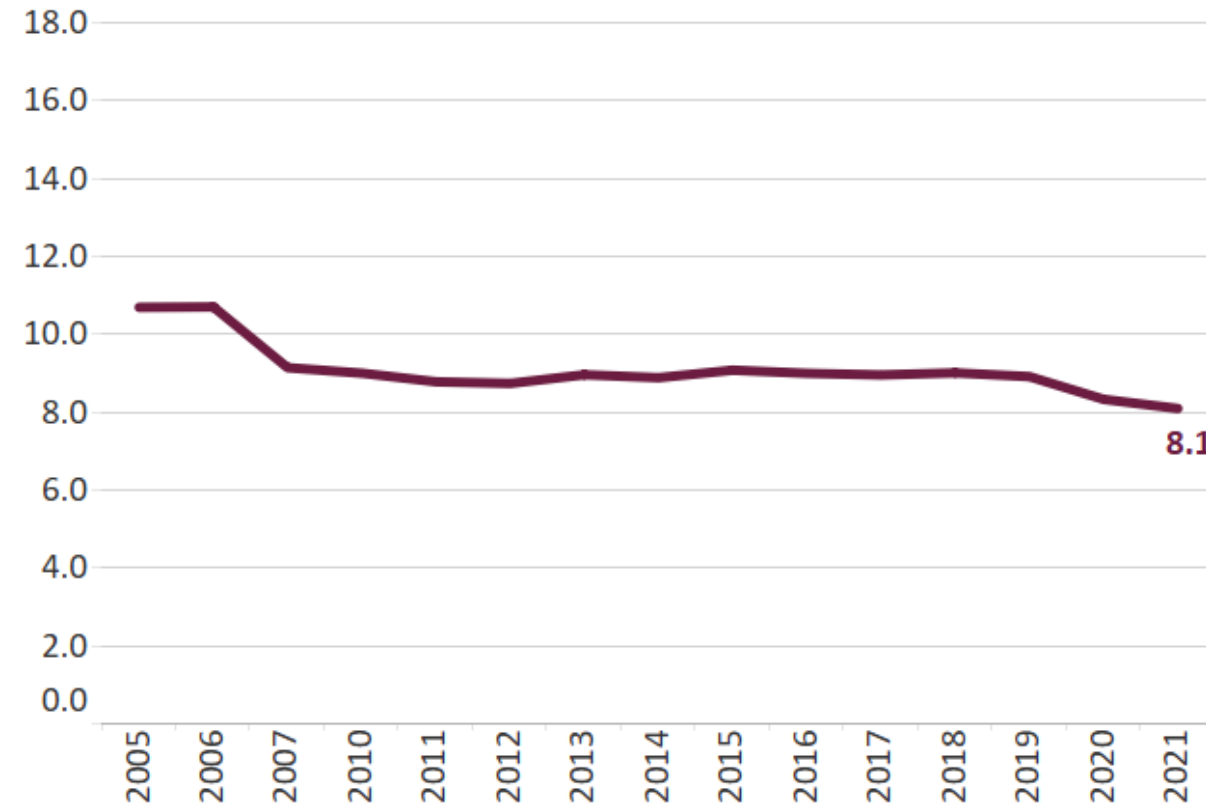


- American Indian/Alaska Native
- Asian/Pacific Islander
- Black/African American
- Latinx
- Multi-Racial
- White

Source: Publicly obtained NCANDS files from NDACAN (children/youth < age 18; federal fiscal year ending 09/30)

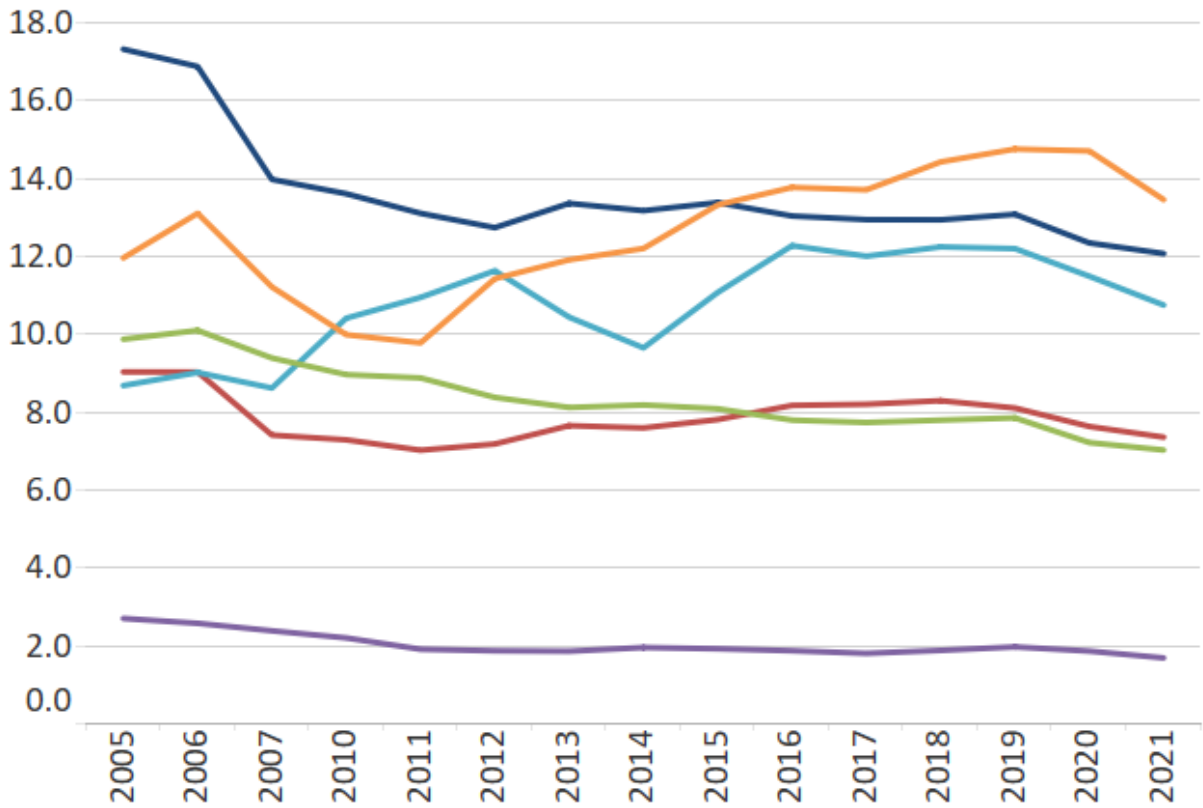
Rate Substantiated | National

How many investigations result in a substantiated allegation?
(per 1,000 children in the population)



- American Indian/Alaska Native
- Asian/Pacific Islander
- Black/African American
- Latinx
- Multi-Racial
- White

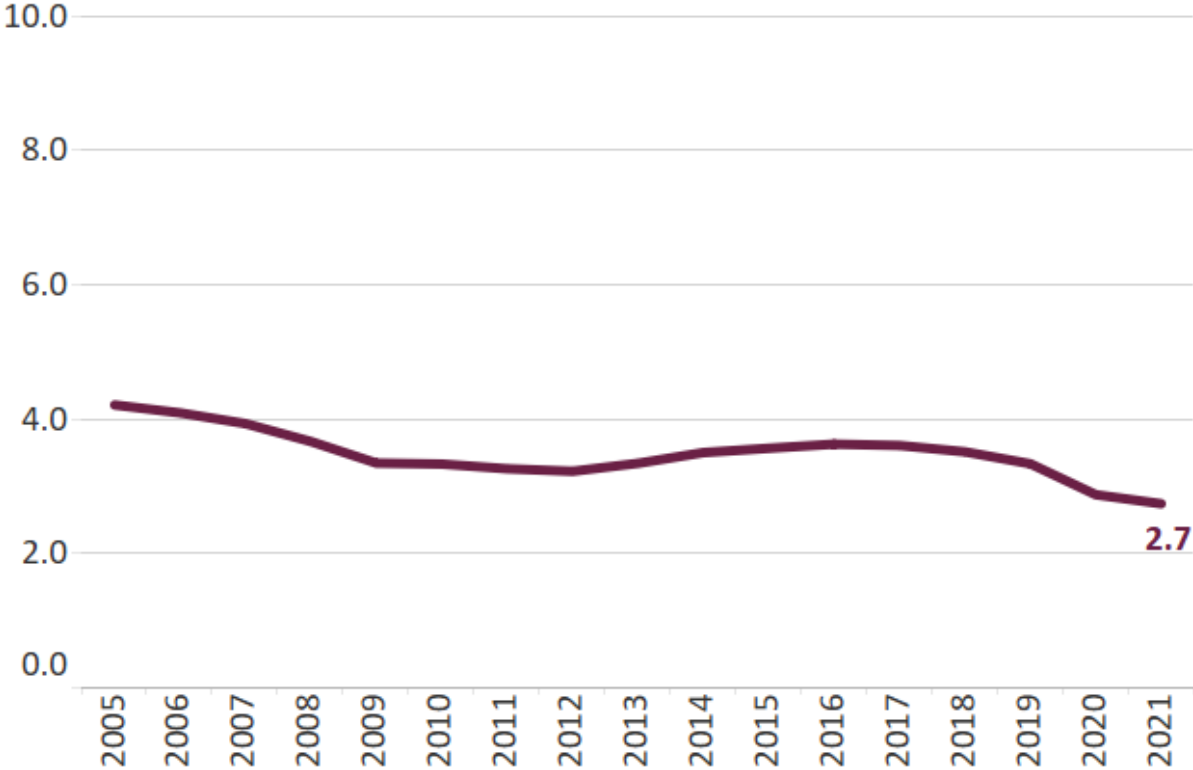
by race/ethnic group



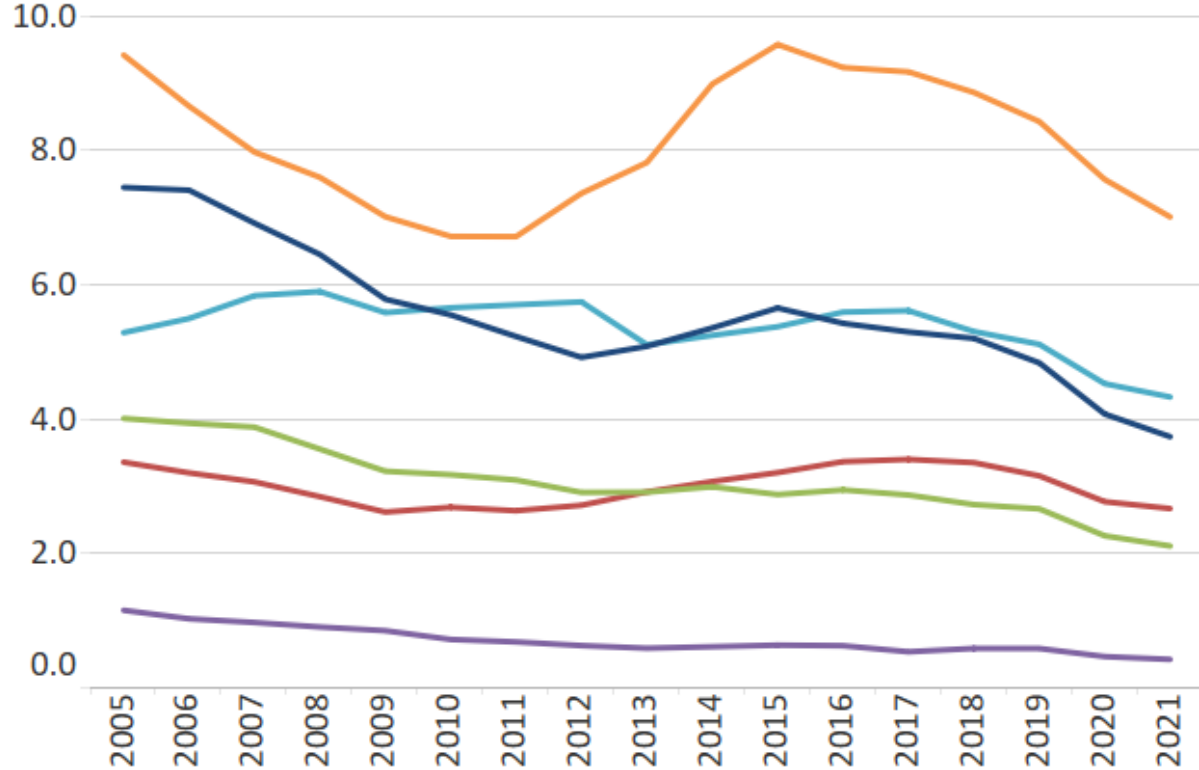
Source: Publicly obtained NCANDS files from NDACAN (children/youth < age 18; federal fiscal year ending 09/30)

Rate Entering Care | National

How many children are entering care?
(per 1,000 in general population)



by race/ethnic group

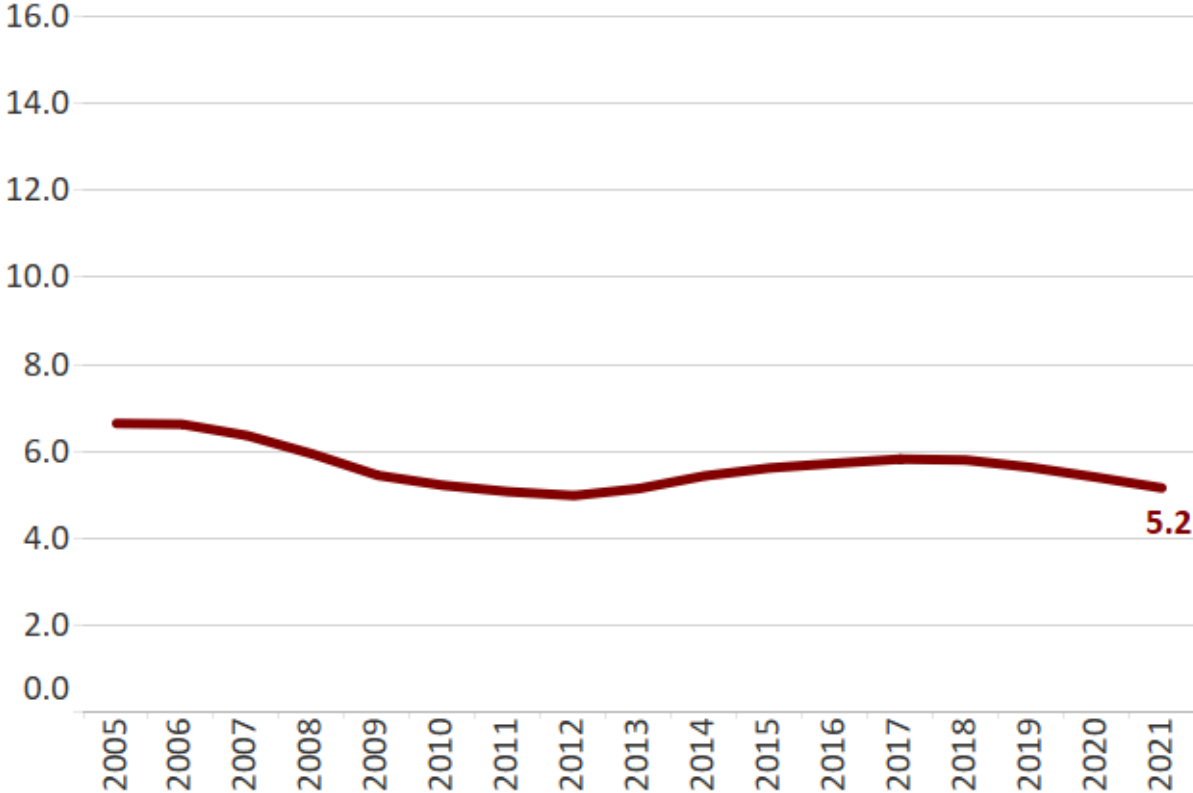


Source: Publicly obtained AFCARS files from NDACAN (children/youth < age 18; federal fiscal year ending 09/30)

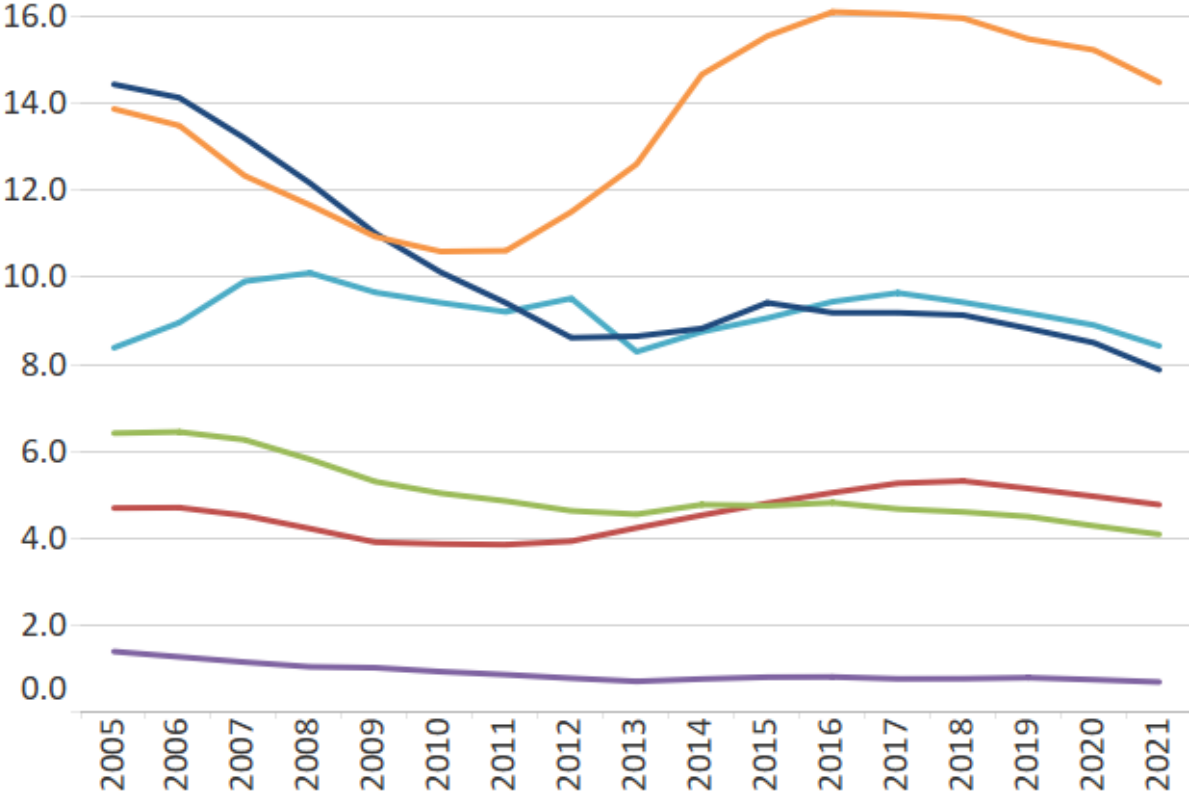
Rate in Care | National

- American Indian/Alaska Native
- Asian/Pacific Islander
- Black/African American
- Latinx
- Multi-Racial
- White

How many children are in care?
(per 1,000 children in the population)



by race/ethnic group



Source: Publicly obtained AFCARS files from NDACAN (children/youth < age 18; federal fiscal year ending 09/30)

Reasons for agency failure

- Poor public perception
- Lacking a definition of success
- Not focused enough
- Insufficient performance

Opportunities for legislative action now

- Leverage the Family First Prevention Services Act
- Evaluate your state's definition of neglect

Types of Neglect Included in State Statutes

Failure to provide necessities (food, clothing, etc.)	49 states
Abandonment	48 states
Medical Neglect	48 states
Failure to Supervise	45 states
Failure to Protect	39 states
Exposure to Drugs/Chemicals (Prenatal exposure/exposure to drug activity)	36 states
Educational Neglect	35 states
Parental Incapacity (Mental illness, disability, incarceration, hospitalization)	21 states
Harmful Environment	17 states
Parental Substance Abuse	15 states

Public Policy implications on child protection services

- Almost all state definitions of neglect deviate from the federal Child Abuse Prevention and Treatment Act (CAPTA) definition in one or more respects.
- Some state neglect definitions are silent about resulting harm to a child or fail to specify that such harm must be serious harm.
- Most states do not include a reference to risk of harm or provide that such risk must be imminent.
 - IN: Child’s physical or mental condition is “seriously endangered” due to parent’s failure to provide necessities
 - IA: Child is “imminently likely to suffer harmful effects” due to lack of supervision
- There is cause for concern that neglect definitions may be contributing to the unnecessary intrusion of child protection services. Data and research will continue to guide work in determining the effect of definitions on reporting, screening, investigations and child removals.