

Addressing Food Insecurity in the Midwest

Craig Gundersen

Snee Family Endowed Chair



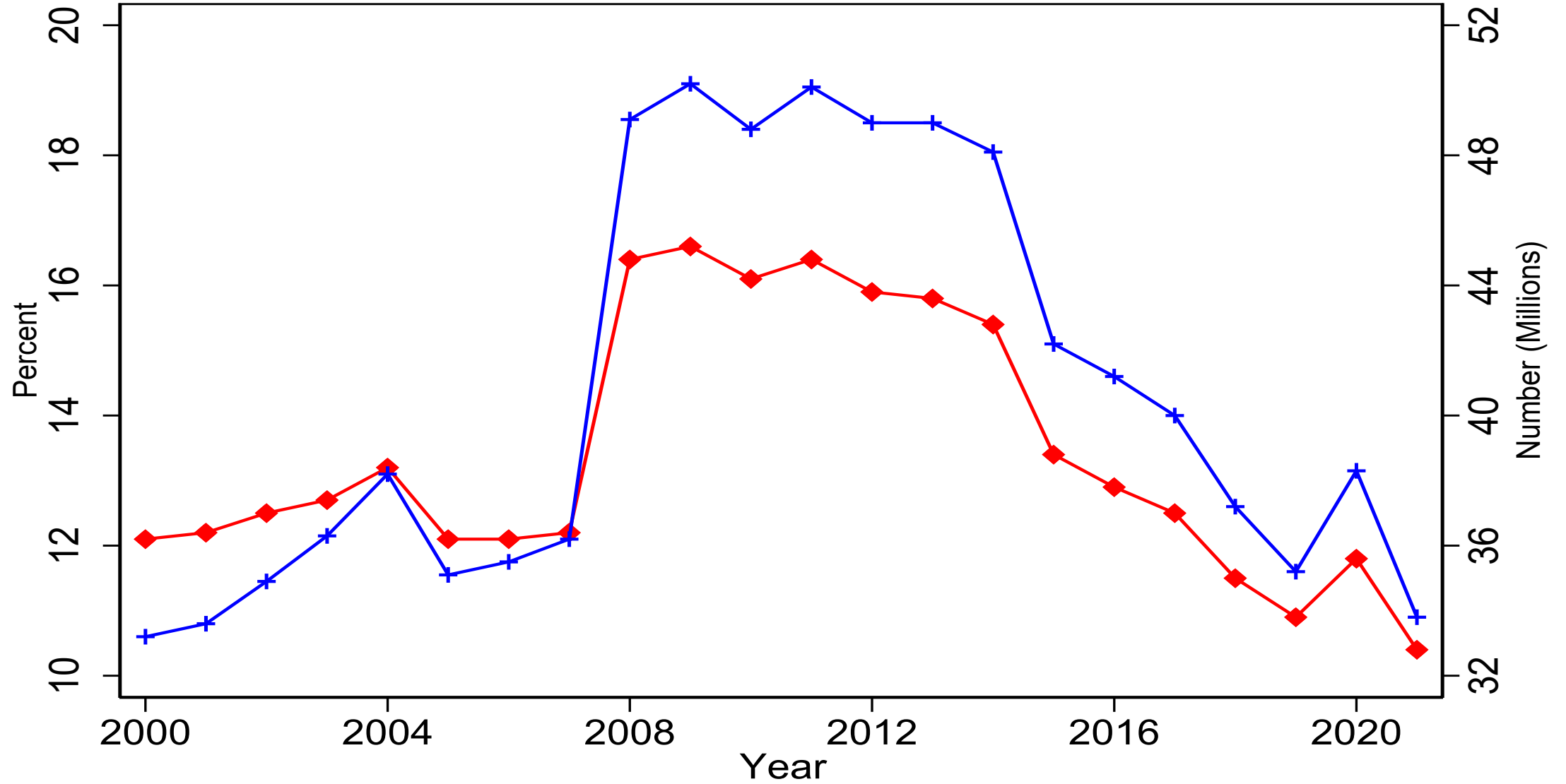
Defining Food Insecurity

- A household's food insecurity status is based on responses to 18 questions in the Core Food Security Module (CFSM)
- Examples of questions:
 - “I worried whether our food would run out before we got money to buy more”
 - “Did you or the other adults in your household ever cut the size of your meals or skip meals because there wasn't enough money for food”
 - “Were you ever hungry but did not eat because you couldn't afford enough food”
 - “Did a child in the household ever not eat for a full day because you couldn't afford enough food”
- Categories
 - food insecure if have 3 or more affirmative responses
 - very low food secure (VLFS) if 8 or more affirmative responses (6 or more for households without children)

Key Determinants of Food Insecurity

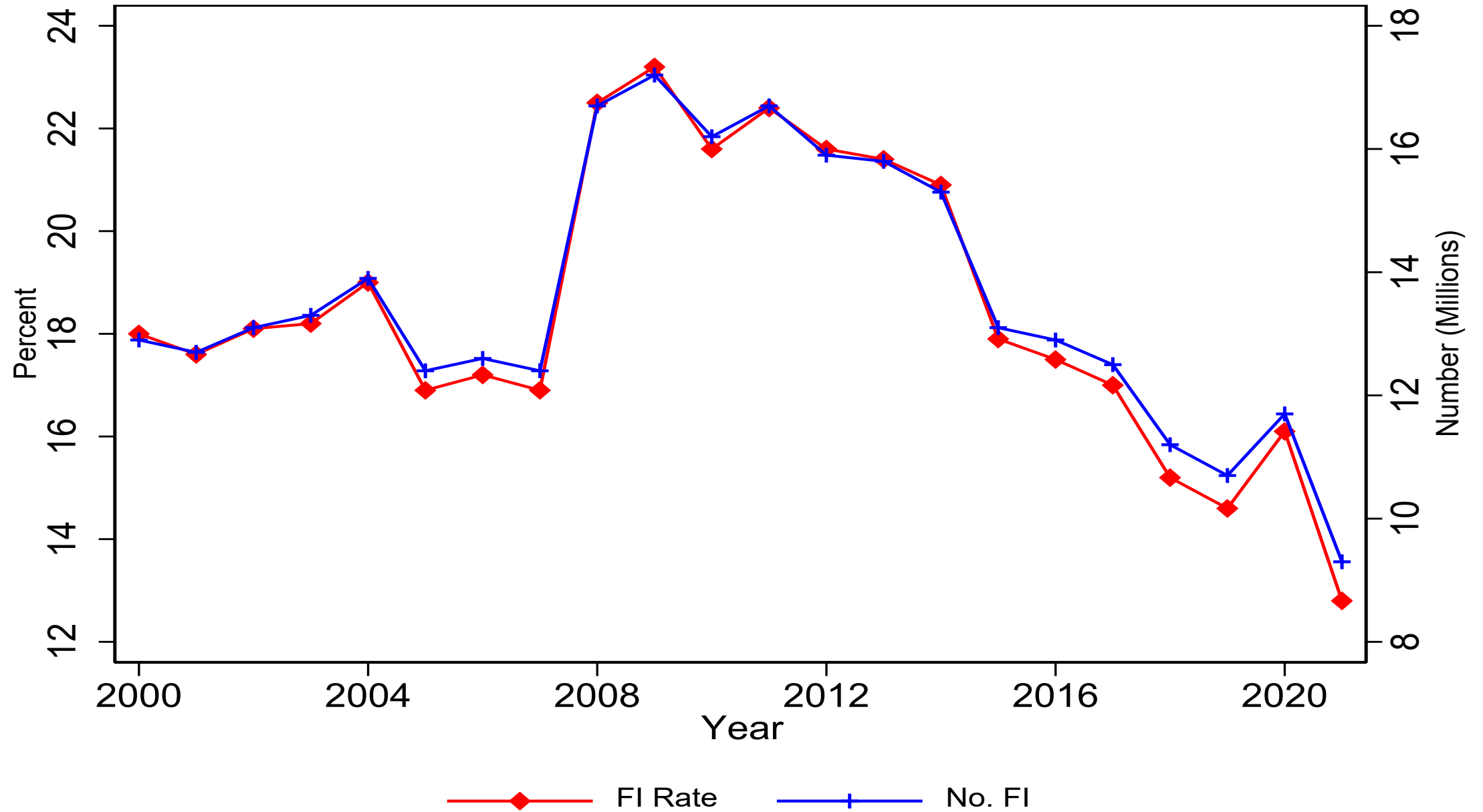
- Resources available to a household
 - economic growth
 - social safety net
 - SNAP
- Prices faced by a household
 - food
 - housing

Trends in Food Insecurity: Full Population

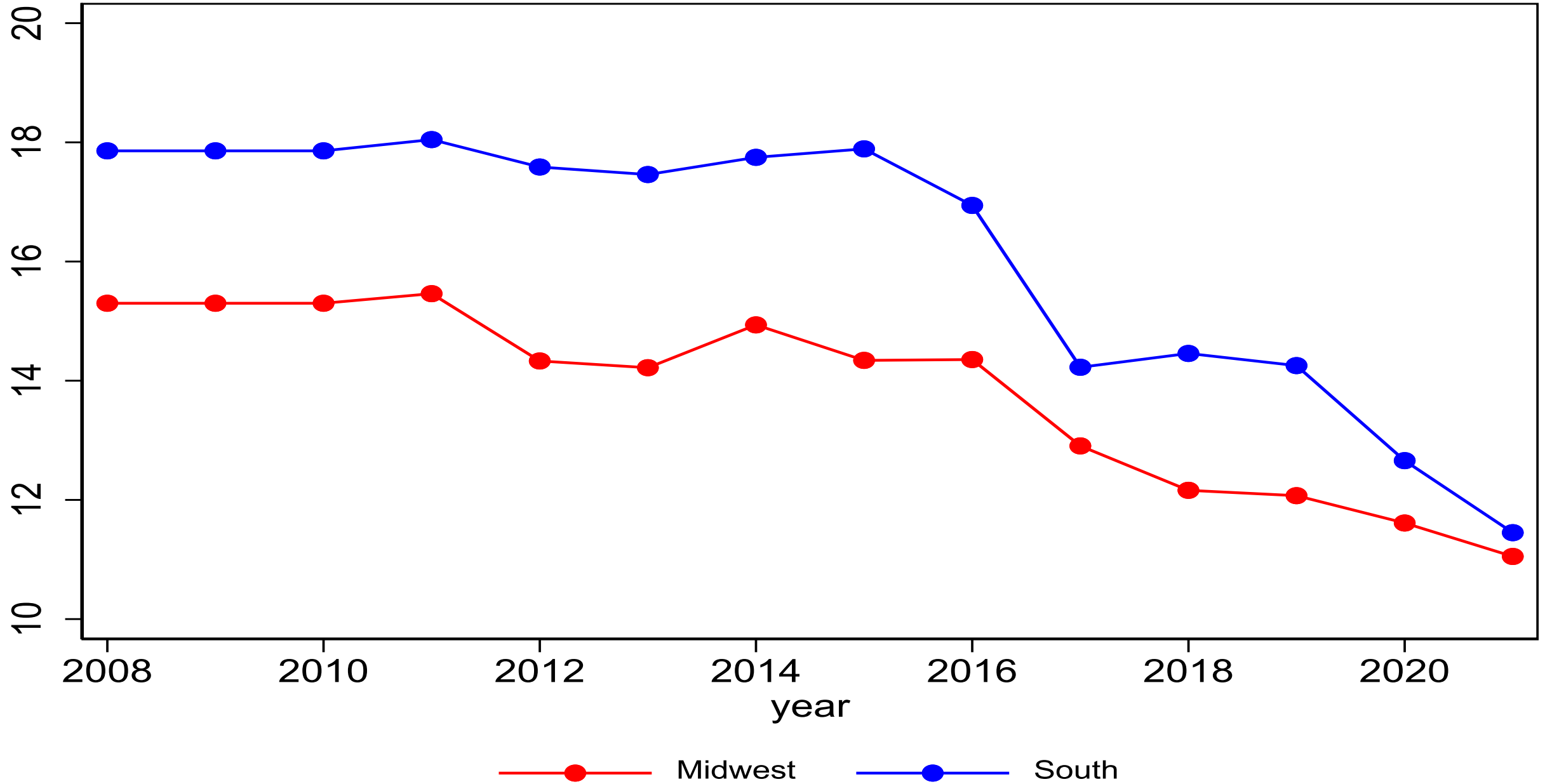


—◆— FI Rate —+— No. FI

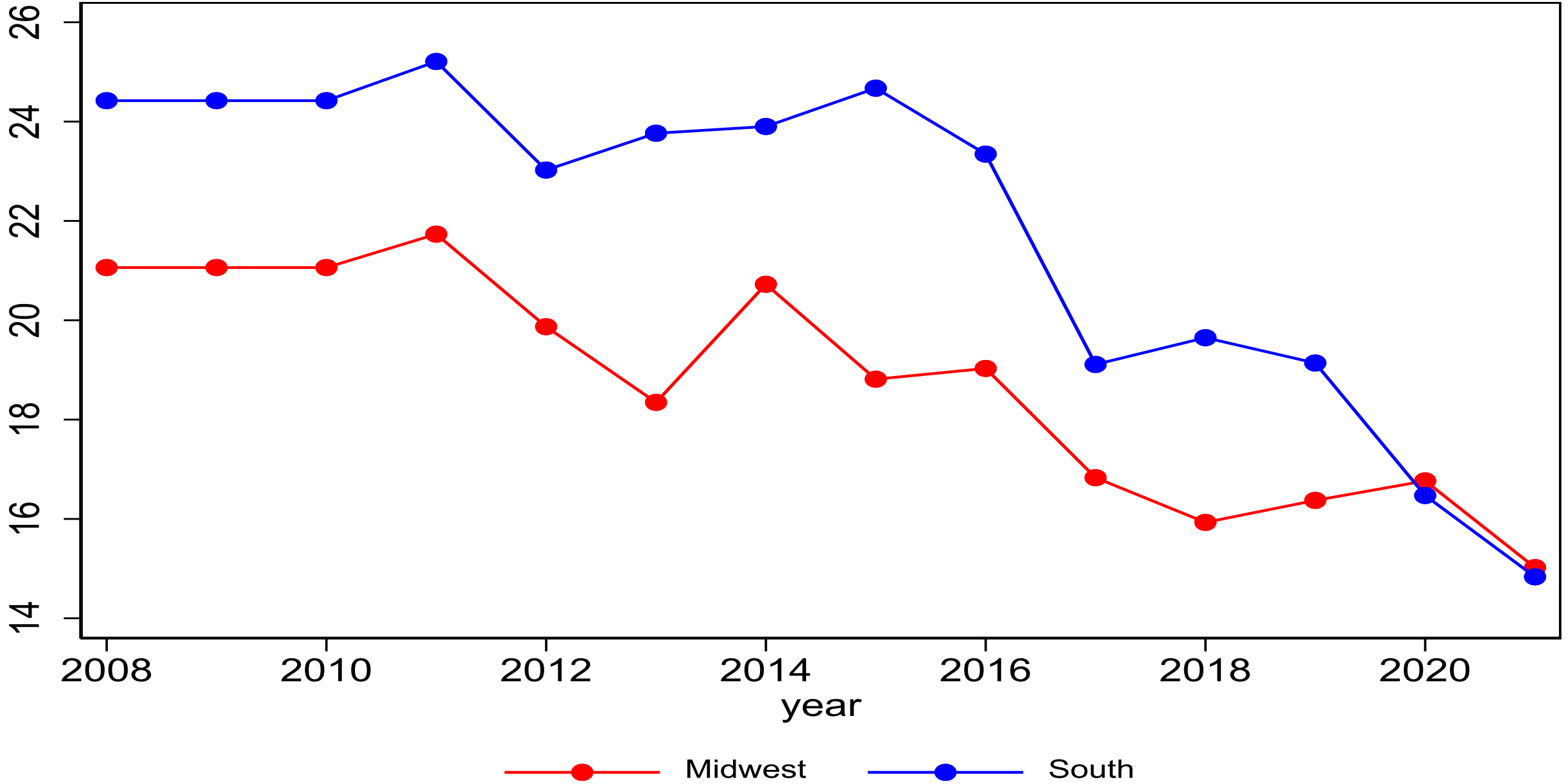
Trends in Food Insecurity among Children, 2000-2021



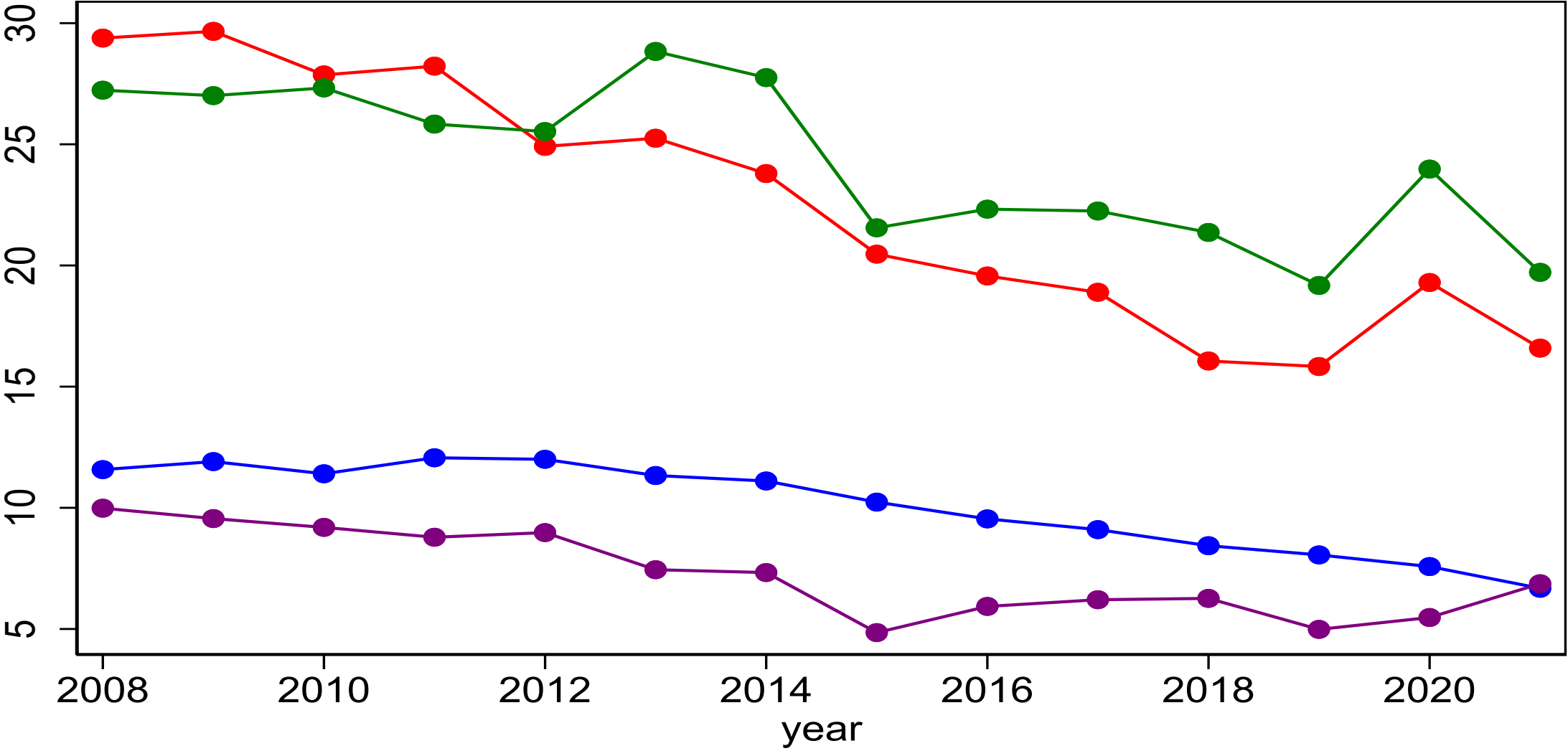
Food Insecurity Rates, All Persons 2008-2021



Food Insecurity Rates, Children, 2008-2021

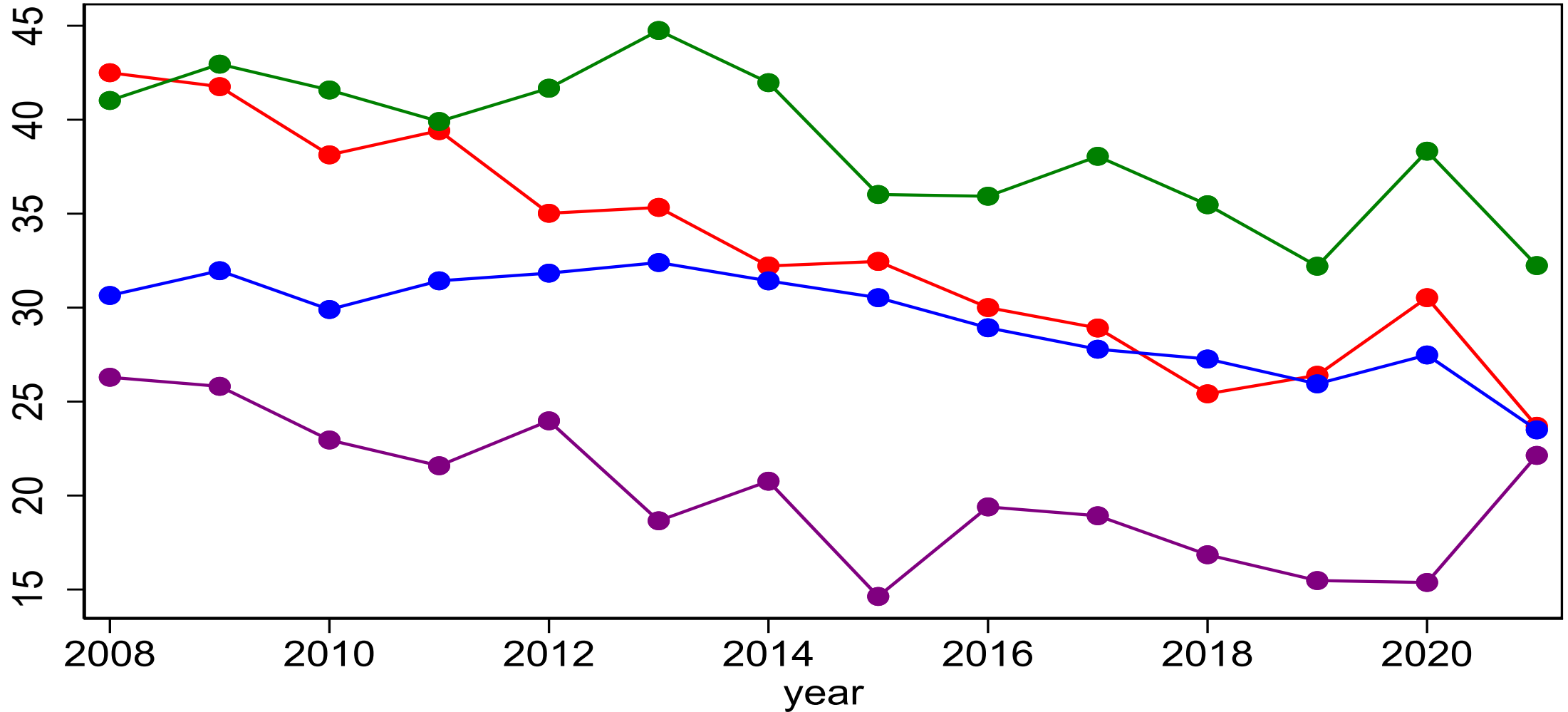


Food Insecurity Rates, 2008-2021



- Hispanic
- Black, Non-Hispanic
- White, Non-Hispanic
- Asian-American, Non-Hispanic

Food Insecurity Rates, 2008-2021
Incomes less than 200% of the Poverty Line

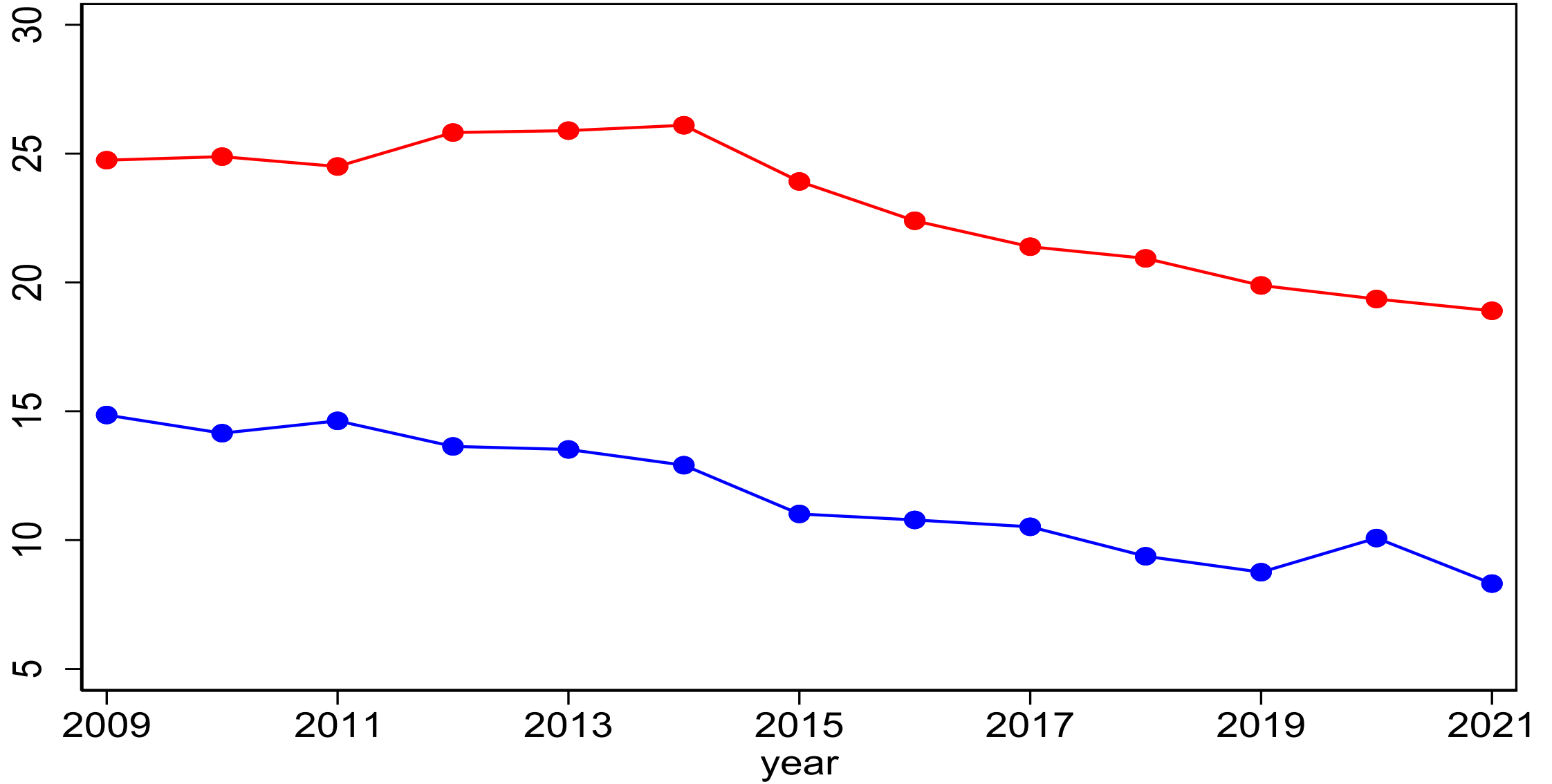


- Hispanic
- Black, Non-Hispanic
- White, Non-Hispanic
- Asian-American, Non-Hispanic

Differences by Region

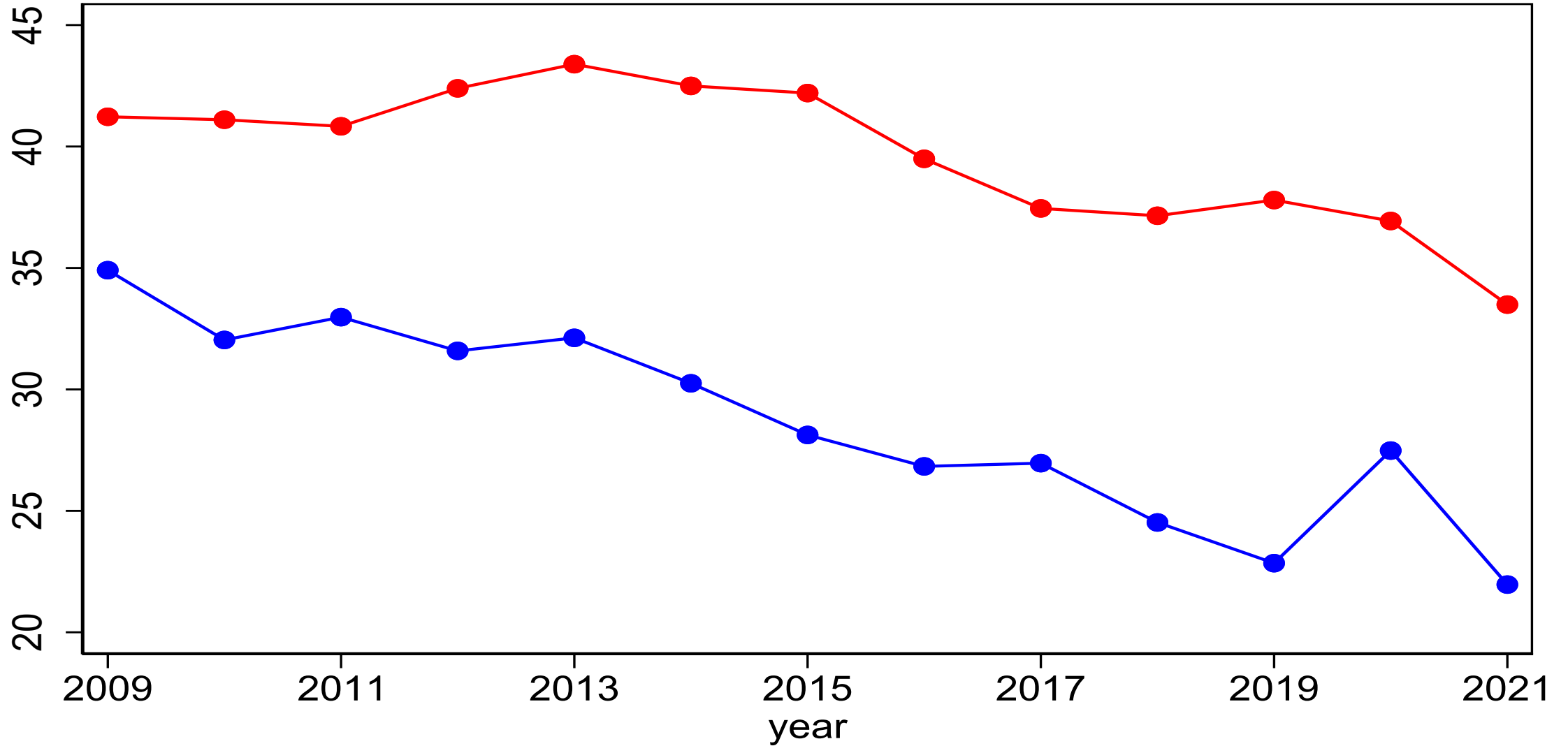
- Food insecurity rates within Congressional Districts
 - comparing mean gaps between Blacks and whites
 - Midwest: 14.8 percentage points higher
 - South: 11.9 percentage points higher
 - comparing maximum gaps between Blacks and whites
 - Midwest: 25.8 percentage points higher
 - South: 18.7 percentage points higher

Food Insecurity Rates by Disability Status, 2009-2021



—●— Disability —●— No Disability

Food Insecurity Rates by Disability Status, 2009-2021
Incomes less than 200% of the Poverty Line

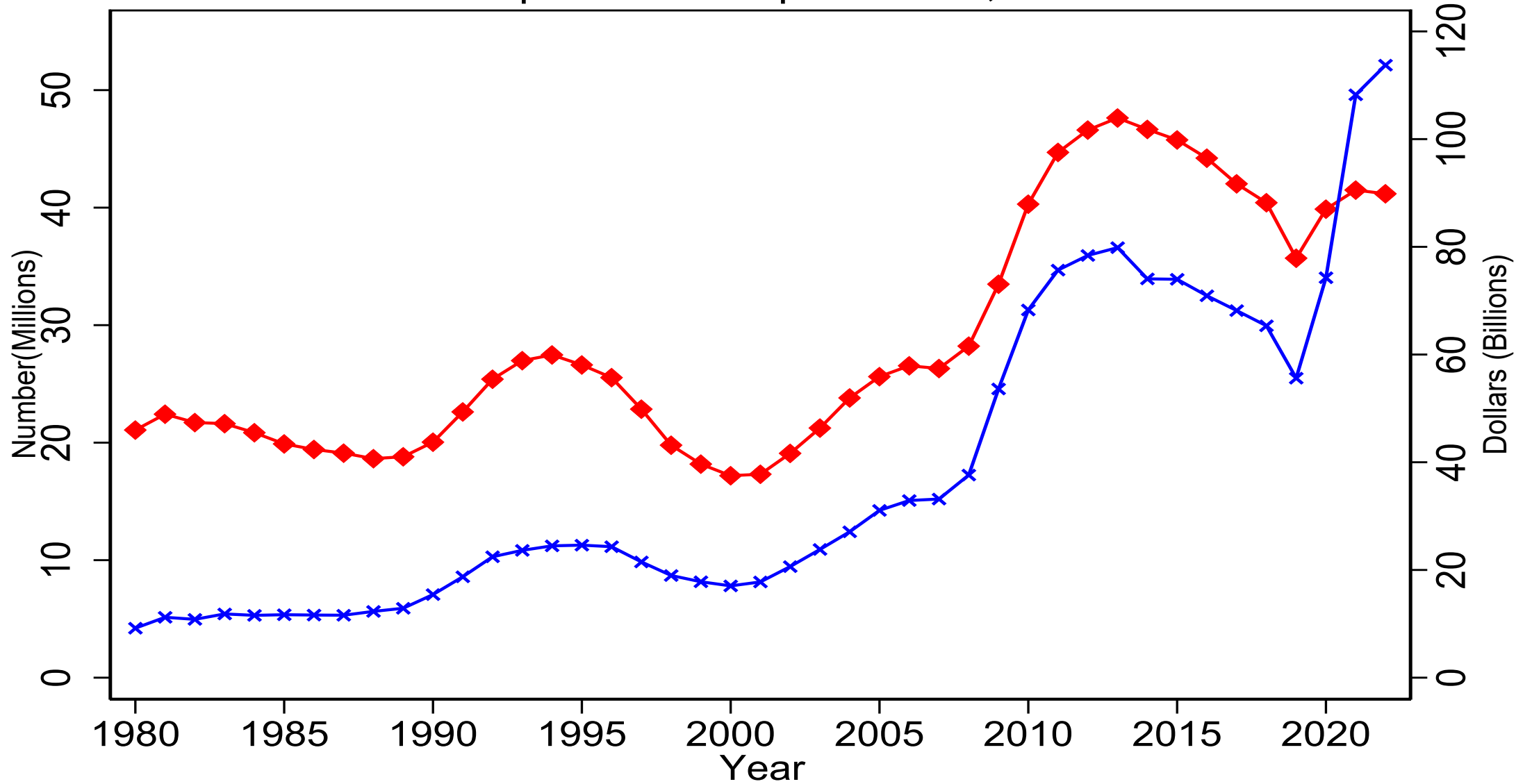


—●— Disability —●— No Disability

Why SNAP is So Successful

- Reaches those most in need
- Provides a substantial amount of money for food
 - maximum of \$929 per month for a family of four
- Entitlement program

SNAP Participants and Expenditures, 1980-2022



—◆— Number of SNAP Participants —×— SNAP Expenditures

Why SNAP is So Successful

- Reaches those most in need
- Provides a substantial amount of money for food
 - maximum of \$929 per month for a family of four
- Entitlement program
- Can be used at virtually all retail food outlets

Redemptions by Firm Type – Firms with at least 1% of Total Redemptions

	Percent of Firms	Percent of Redemptions
Combination grocery/other	22.2	5.4
Convenience store	45.3	5.6
Large grocery store	1.4	2.1
Medium grocery store	3.6	2.1
Small grocery store	5.0	1.3
Super store	7.6	52.3
Supermarket	6.7	29.5

Why SNAP is So Successful

- Reaches those most in need
- Provides a substantial amount of money for food
 - maximum of \$929 per month for a family of four
- Entitlement program
- Can be used at virtually all retail food outlets
- Gives dignity to recipients
 - can shop alongside neighbors, friends, and family
 - not discouraged from earning money
- Gives autonomy to recipients
 - can make choices consistent with preferences, culture, constraints of family

SNAP and Food Insecurity

- SNAP participants are 30% less likely than non-participants to be food insecure
 - after controlling for non-random selection into the program
- Impact of recent increase in Thrifty Food Plan
 - decline in food insecurity from 2019 to 2021
 - 35.2 million to 33.8 million
 - decline in food insecurity among SNAP participants from 2019 to 2021
 - 18.0 million to 16.9 million
 - proportion of decline due to SNAP
 - 78.5%

Ways to Enhance

- Streamline recertification process
 - can be lots of confusion
 - substantial churn
- Remove asset test (or set much higher)
 - don't want to discourage savings
- Give states flexibility on net income threshold