

The background of the slide is a photograph of a cornfield at sunset. The sky is a mix of orange, pink, and blue. In the foreground, the dry, brown stalks of corn are visible. In the distance, there are several farm buildings, including a large white barn and a smaller structure. The overall scene is peaceful and rural.

The Council of State Government's Midwestern Legislative Conference

American Farmland Trust - Midwest

Kris Reynolds, Midwest Regional Director





SAVING THE LAND THAT SUSTAINS US

- Protecting farm and ranch land
- Promoting sound farming practices
- Keeping farmers on the land





AFT's Reason to Be is to Avert Catastrophe

Our Approach

Identify
Threats to
Agricultural
Land



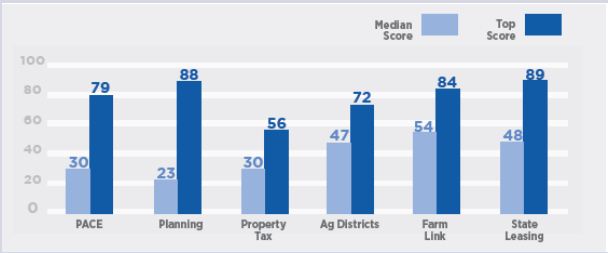
Inform
Policymaking

AND

Protect More
Farmland and
Ranchland



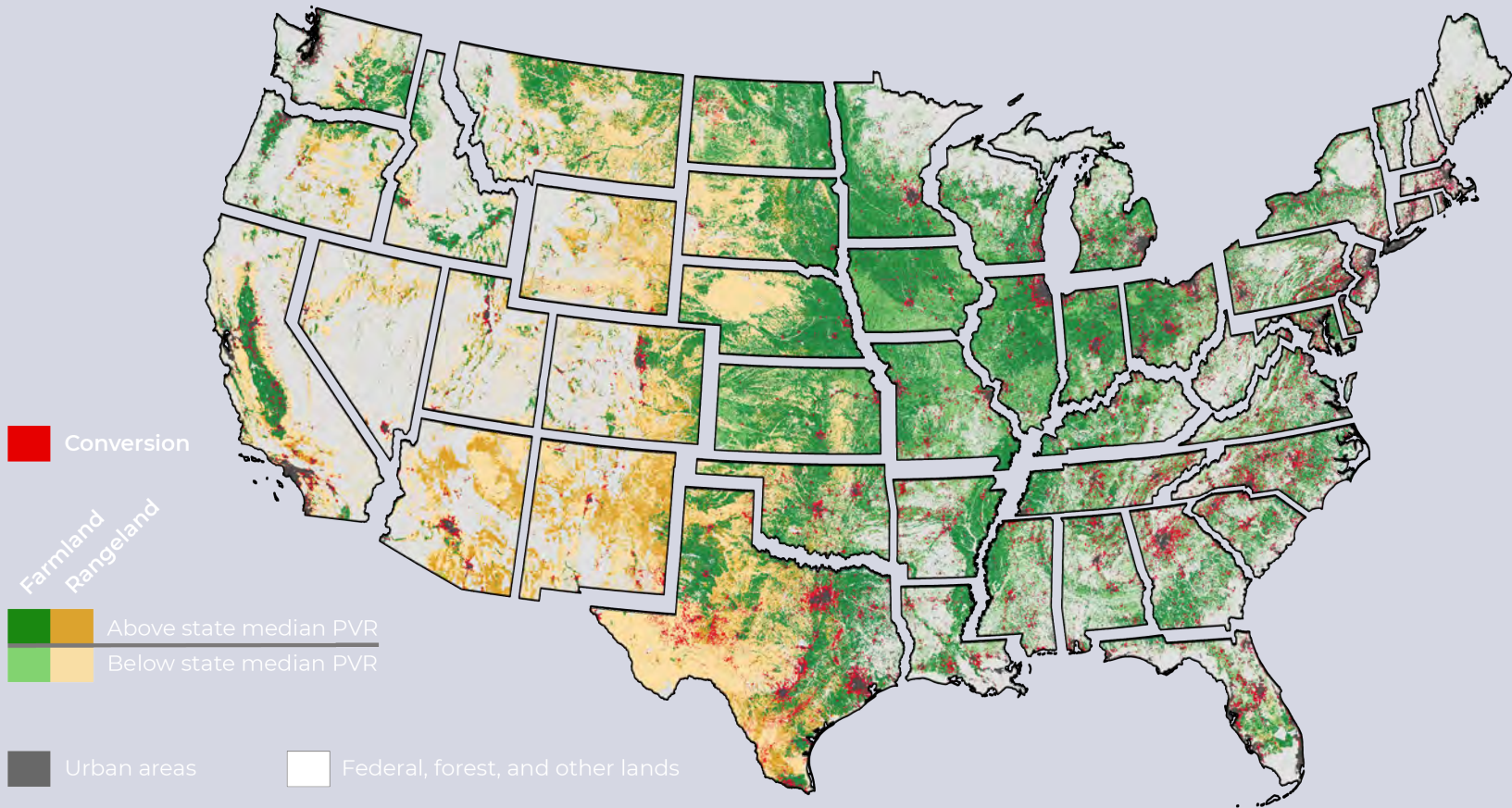
Analyze
State
Policy
Response
s



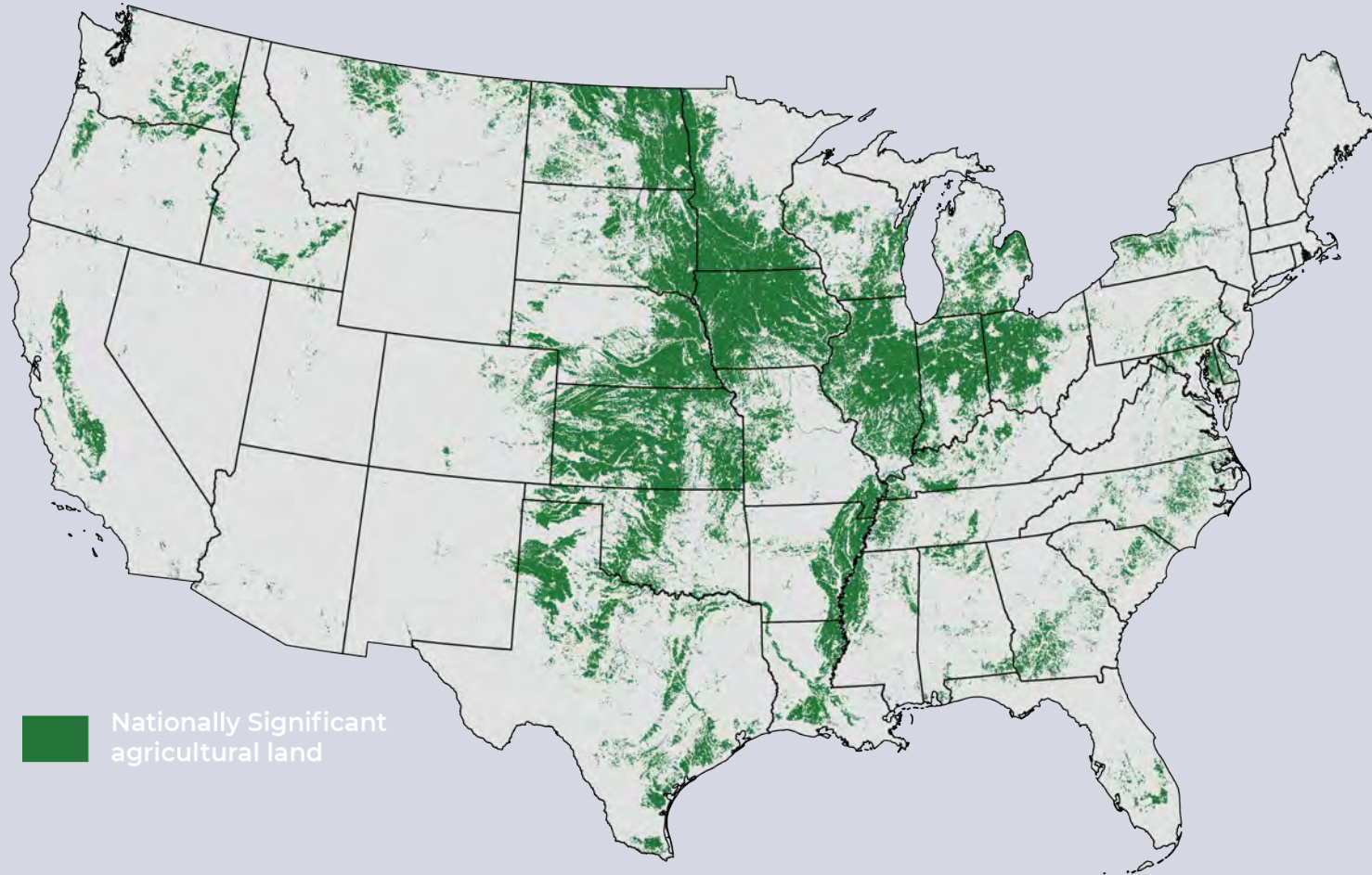
Farms Under Threat 2040: Choosing an Abundant Future

AFT's multi-year initiative to document the status of and threats to America's agricultural land while offering policy solutions to save that land.

11 Million Acres Converted, 2001-2016



Nationally Significant Agricultural Land



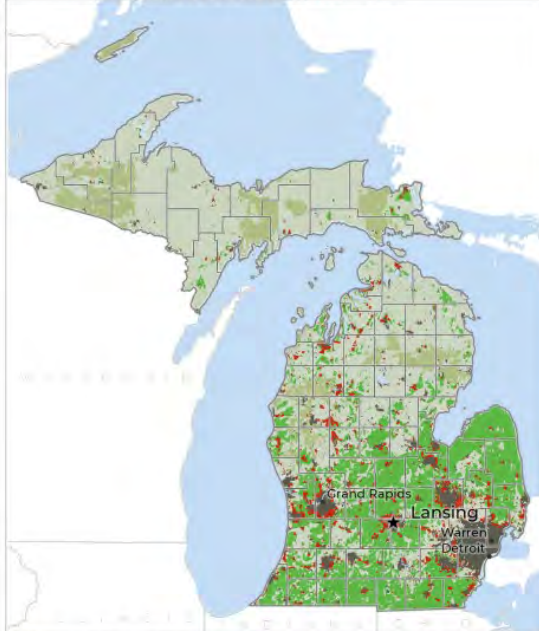
 Nationally Significant agricultural land



2040 Future Scenarios Michigan

Farms Under Threat 2040: Choosing an Abundant Future mapped three scenarios of development between 2016 and 2040. If recent trends continue, **483,800 acres** of Michigan's farmland will be paved over, fragmented, or converted to uses that jeopardize agriculture. **That's 4%**. Michiganians can slash conversion, save farmland, and safeguard the future of agriculture and the environment by choosing compact development.

PROJECTED AGRICULTURAL LAND CONVERSION 2016-2040



Projected agricultural land conversion from 2016-2040 in the *Business as Usual* scenario.

Projected Conversion (2040)

■ Urban and highly developed (UHD) and low-density residential (LDR)

Land Cover (2016)

■ Farmland*	■ Other lands	■ Urban areas
■ Forestland	■ Federal (no grazing)	■ Water

*Farmland is composed of cropland, pastureland, and woodland associated with farms.

On recent trends, from 2016 to 2040:

Michiganians will pave over, fragment, or compromise

483,800 acres of farmland.

That's the equivalent of losing

3,100 farms,
\$353 million
in farm output, and
8,100 jobs
based on county averages.¹

63% of the conversion will occur on Michigan's Nationally Significant land.²

Hardest-hit counties:

- ▶ **Genesee**
- ▶ **Kent**
- ▶ **Ottawa**

¹ Census of Agriculture 2017
² Freedgood et al. 2020

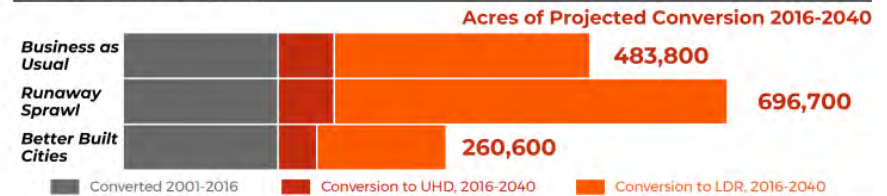
American Farmland Trust

WHICH FUTURE WILL WE CHOOSE?

How Michiganians choose to develop will shape the future of farming. The scenarios in **Farms Under Threat 2040** show the impacts:

- Business as Usual:** Development follows recent patterns. Poorly planned development and low-density residential sprawl continue to rapidly convert farmland and rangeland.
- Runaway Sprawl:** Development becomes even less efficient than in *Business as Usual*. Low-density housing sweeps across the countryside, displacing farmers and ranchers.
- Better Built Cities:** Policymakers and land-use planners promote compact development and reduce sprawl, saving irreplaceable farmland and rangeland from conversion.

COMPACT GROWTH CAN SAVE FARMS



Michigan's farmland will be converted to:

Urban and highly developed (UHD) land use includes commercial, industrial, and moderate-to-high density residential areas.

Low-density residential (LDR) land use includes scattered subdivisions and large-lot housing, which fragment the agricultural land base and limit production, marketing, and management options for the working farms and ranches that remain.

LDR PAVES THE WAY FOR FURTHER DEVELOPMENT

Agricultural land that was in LDR areas in 2016 is

9 TIMES MORE LIKELY

to be converted to UHD by 2040, compared to other agricultural land.

DEVELOPMENT CHOICES MATTER

By choosing the *Better Built Cities* scenario instead of *Runaway Sprawl*, Michiganians can save

436,000 acres of farmland.

That's the equivalent of saving

2,800 farms,

\$318 million in farm output, and

7,100 jobs

based on county averages¹.

¹ Census of Agriculture 2017

WHAT POLICYMAKERS CAN DO

- Encourage compact development to minimize sprawl.
- Permanently protect our best farmland with voluntary conservation easements.
- Forge a path to success for a new generation of farmers.



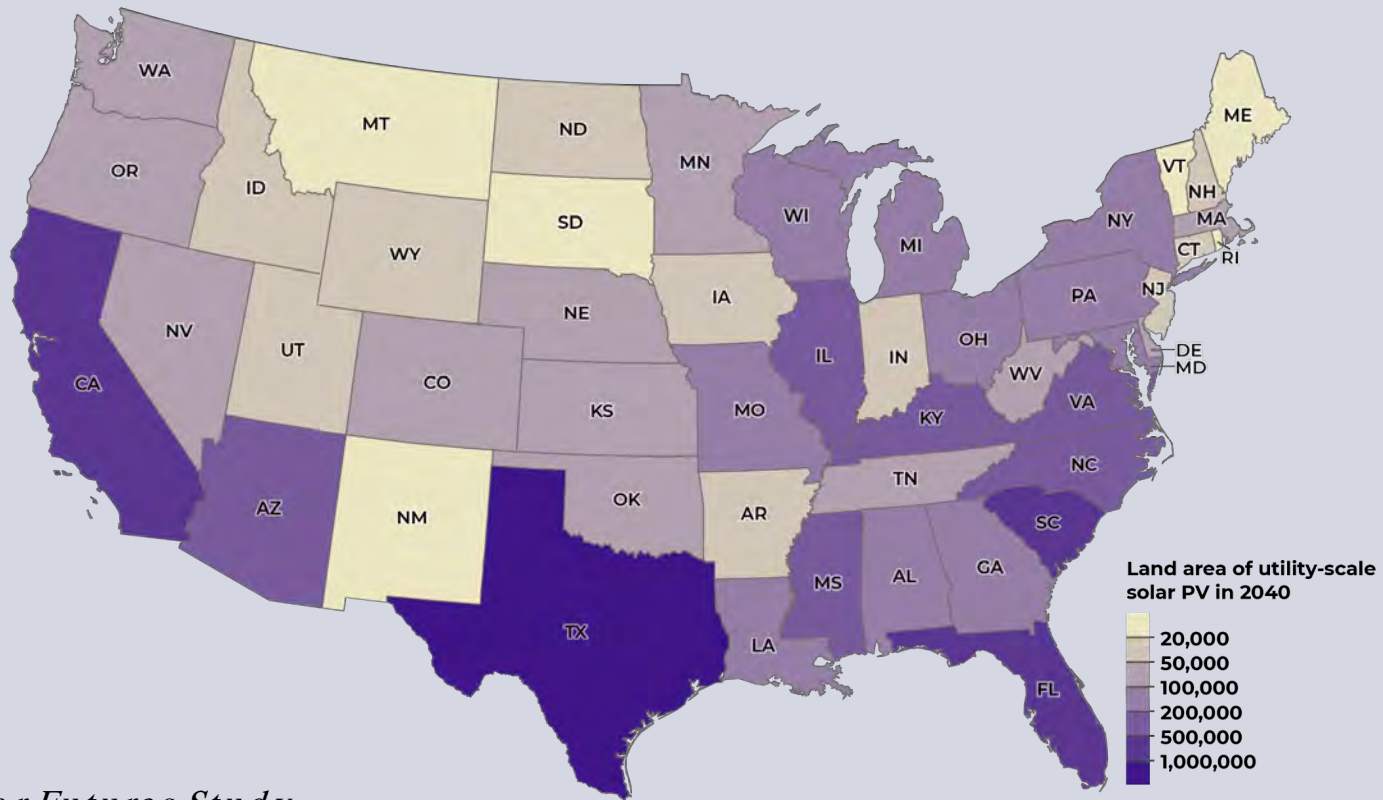
Farms Under Threat is American Farmland Trust's multi-year initiative to document the status of and threats to U.S. farmland and rangeland and to identify policy solutions to protect and conserve America's diverse agricultural landscape. For questions and to access the data, please contact AFT's Farmland Information Center: www.farmlandinfo.org or (800) 370-4879.

©American Farmland Trust 2022. Analytics and mapping by Conservation Science Partners and the University of Wisconsin-Madison.

Explore our interactive maps and read the full report at www.farmland.org/farmsunderthreat

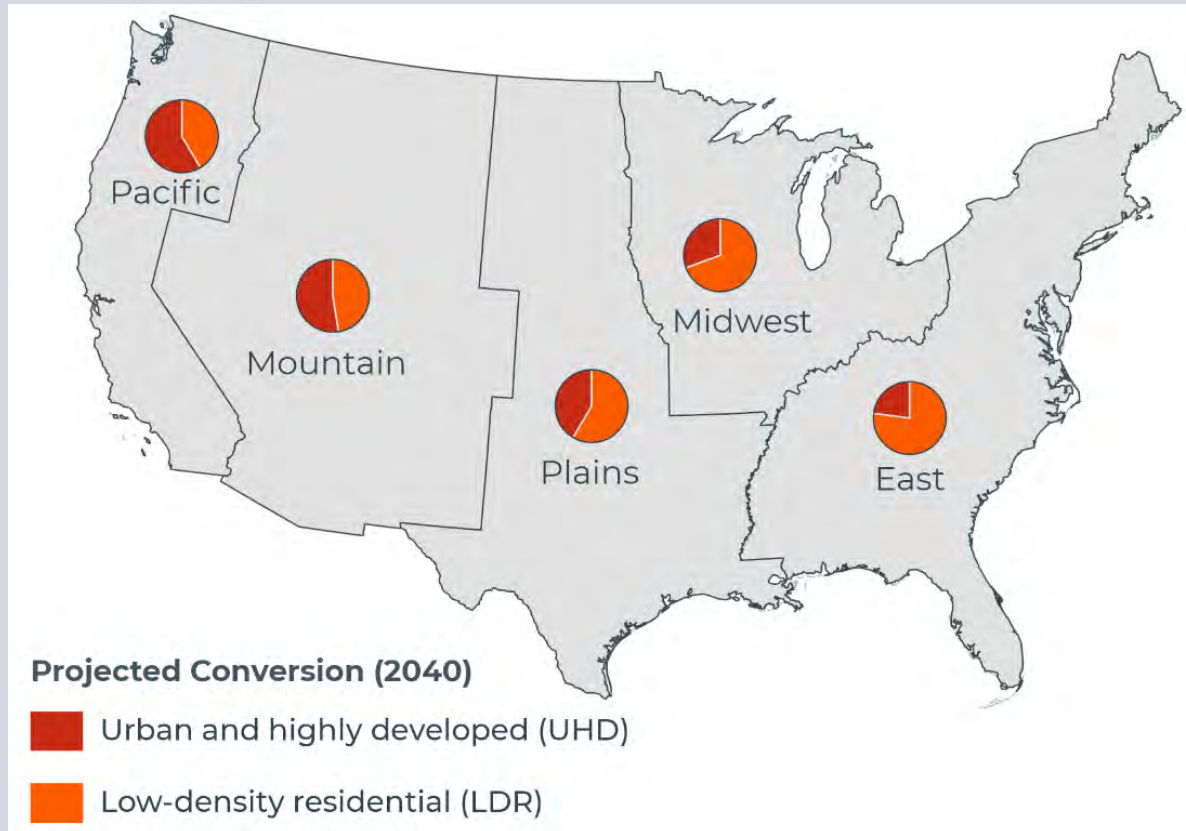


Acres of Utility-Scale Solar in 2040



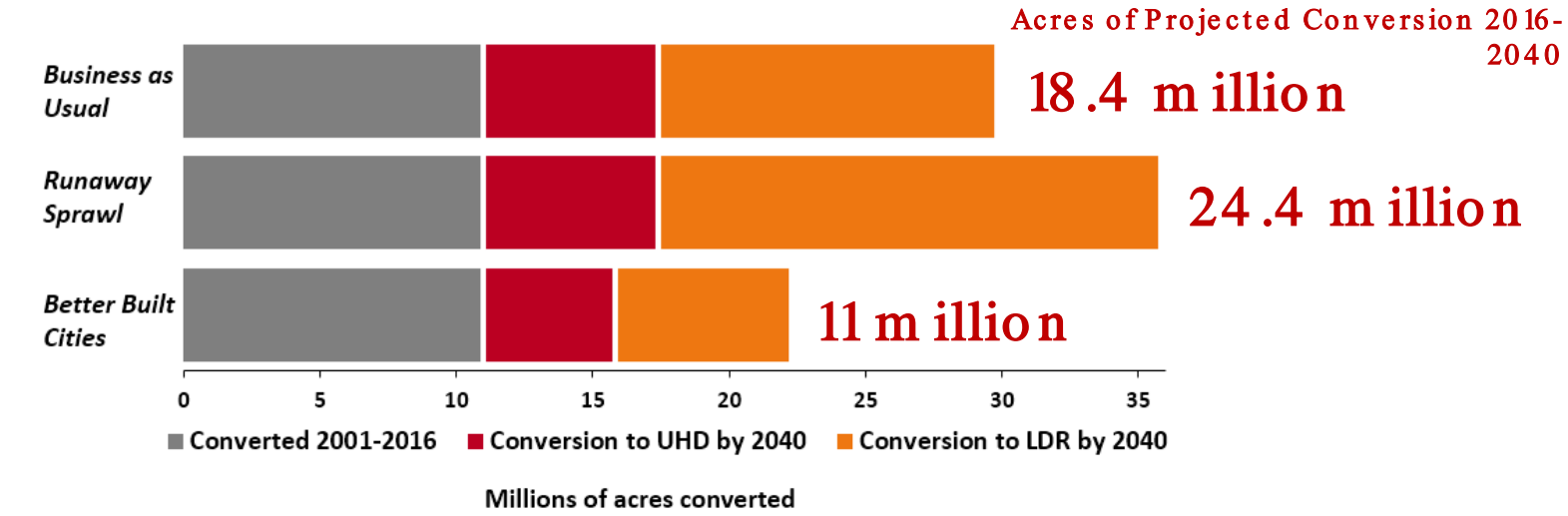
Sources:
DOE, 2021, *Solar Futures Study*

Low-Density Residential Conversion is Dominant in the Midwest

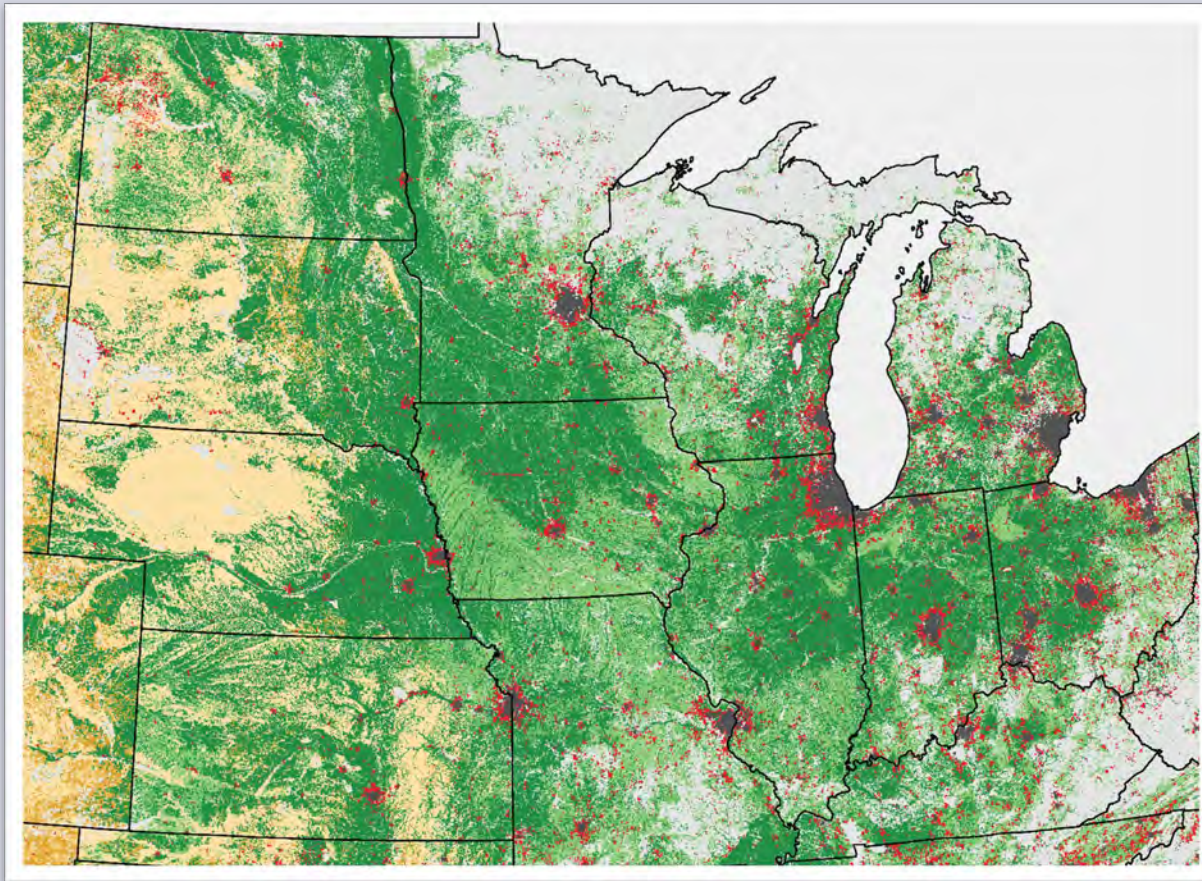


Projected conversion of agricultural lands to UHD and LDR land uses by 2040 in the *Business as Usual* scenario, proportion by region.

Which Future Will We Choose?



Midwestern States by the Numbers



We project that by 2040 IL, IN, IA, KS, MI, MN, NE, ND, OH, SD and WI will pave over, compromise, or fragment:

Business as usual: 3,541,000ac

Runaway Sprawl: 4,683,800ac

Better Built Cities: 2,045,000ac

**Solar Development:
397,100ac***

Agricultural lands
grow our food and
provide essential
environmental
services.