



U.S. DEPARTMENT OF
ENERGY

OFFICE OF
ENVIRONMENTAL
MANAGEMENT

Council of State Governments Midwestern Radioactive Materials Transportation Committee

James Mason
DOE Carlsbad Field Office
Institutional Affairs
Program Manager

Bobby St. John
Salado Isolation Mining Contractors
External Communications Manager

October 11, 2023

The WIPP Team



U.S. Department of Energy Carlsbad Field Office

- Leads the Transuranic Waste Program
- Science Program



Salado Isolation Mining Contractors LLC

- Manages and operates the WIPP facility
- Manages transportation logistics and packages
- Manages waste retrieval, characterization and certification
- Mobile loading



Los Alamos National Laboratory

- Scientific advisor for waste characterization



Aleut Aerospace Engineering, LLC- TRANSCOM

- Satellite Tracking



Sandia National Laboratories

- Scientific advisor for repository recertification



CBFO Technical Assistance Contractor

- Technical and Quality Assurance support for the Carlsbad Field Office



Specialty Transportation, Inc.

CAST Specialty Transportation

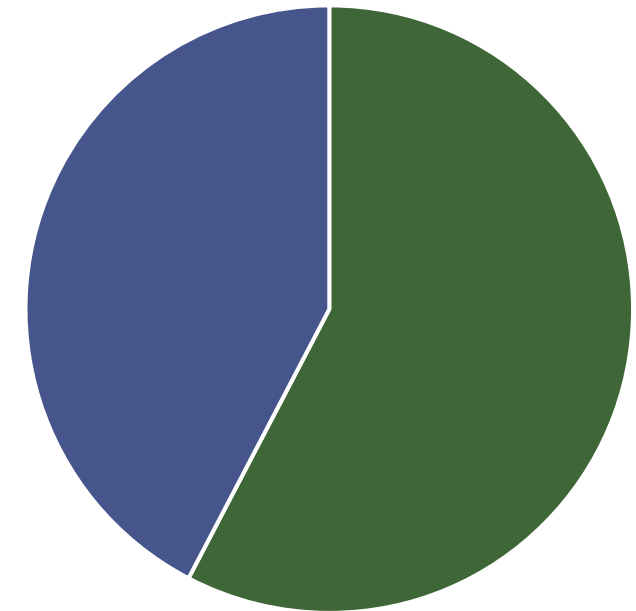
- Transportation carrier

Guidelines for WIPP Disposal

- WIPP Land Withdrawal Act (LWA)
- Defense generated transuranic
- Must meet WIPP Waste Acceptance Criteria
- WIPP Transuranic Waste Capacity 6.2M Ft³
 - Current volume capacity filled 2.6M Ft³ (42%)



WIPP LWA Capacity (Cubic Feet)



■ LWA Remaining Capacity

Safe Transportation

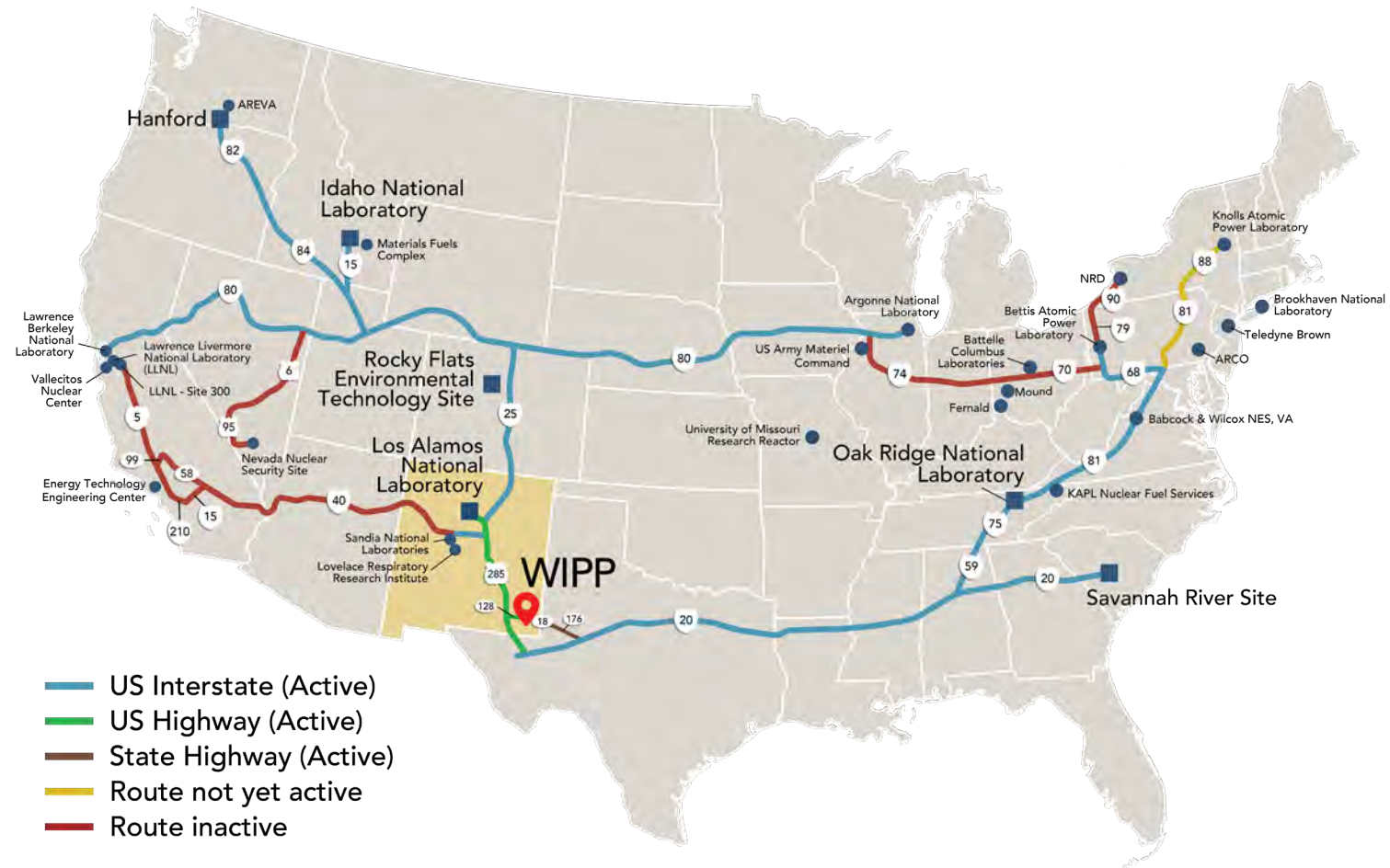
- Received **473** shipment in FY 2023
- Averaging 10 – 12 shipments/week
- Total shipments received
 - **13,688**
- Total loaded miles traveled
 - **16,377,038**
- FY23 shipping totals:
 - ANL 5
 - INL 348
 - LANL 68
 - LLNL 5
 - ORNL 21
 - SRS 26

As of 10/09/2023



Increase Shipments

- Targeting 15-17 shipments per week
- Increase number of driver teams
- Increase number of waste handling employees
- Improve coordination with sites on shipping needs/schedules
- Improve planning for scheduled maintenance outages



Panel 8

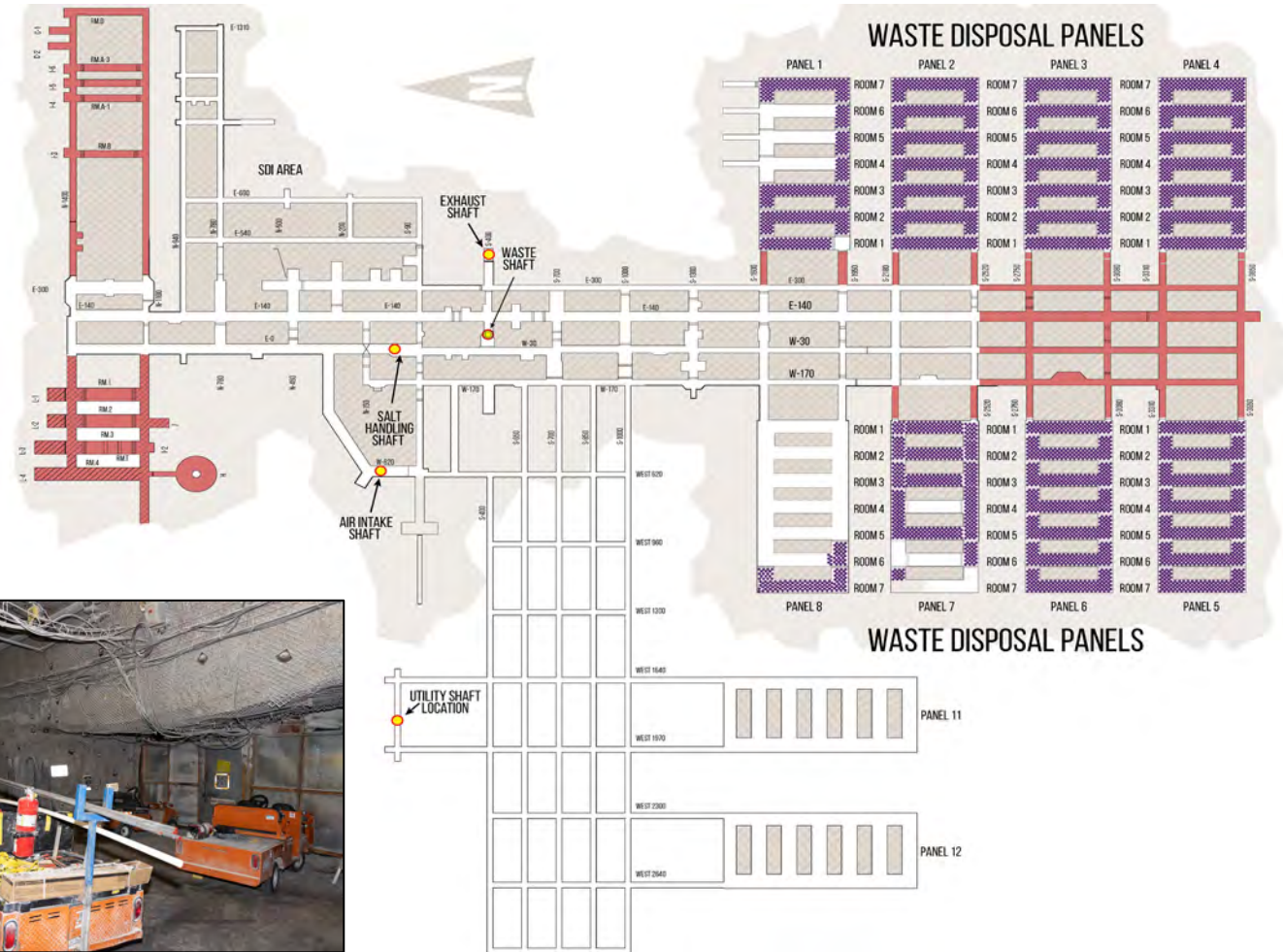
- Waste emplacement began in November 2022
- Currently emplacing in Room 6, Panel 8
- Use of protective clothing not required
- Containers emplaced:
 - 11,009

As of 10/09/2023



Underground Status

- Mining done on just-in-time basis due to salt creep
- Currently mining access drifts to the west
- Drifts will tie into the Utility Shaft and replacement panels 11 and 12
- Preparing to equip west mains with infrastructure
- Mine Safety and Health Administration Inspections



Capital Projects

Safety Significant Confinement Ventilation System (SSCVS)

Increasing airflow to the underground
540,000 cfm

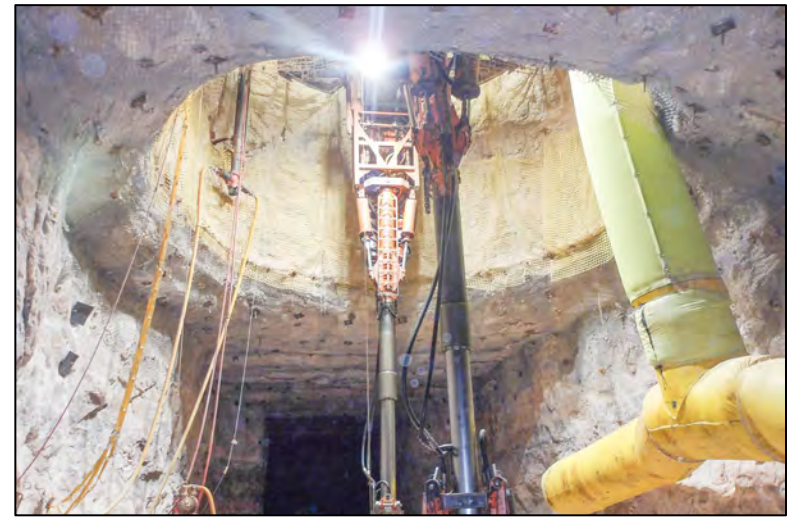
Progress

- Overall project about 79 percent complete
 - New Filter Building (NFB) about 80 percent complete
 - Salt Reduction Building (SRB) about 93 percent complete
- Exhaust stack now complete
- Asphalt work underway



Capital Project – Utility Shaft

- Providing higher-capacity air intake for the underground in conjunction with SSCVS system
 - Shaft sinking complete (2,275 feet)
 - 30-foot diameter shaft
 - (26-feet with liner in place)
 - Station development is underway
 - Mining equipment will be lowered to station
 - Mining drifts to tie into existing underground



General Plant Projects

- Fire system improvements
- Substation upgrades
- Public address system
- SSCVS tie-ins
- Fuel station



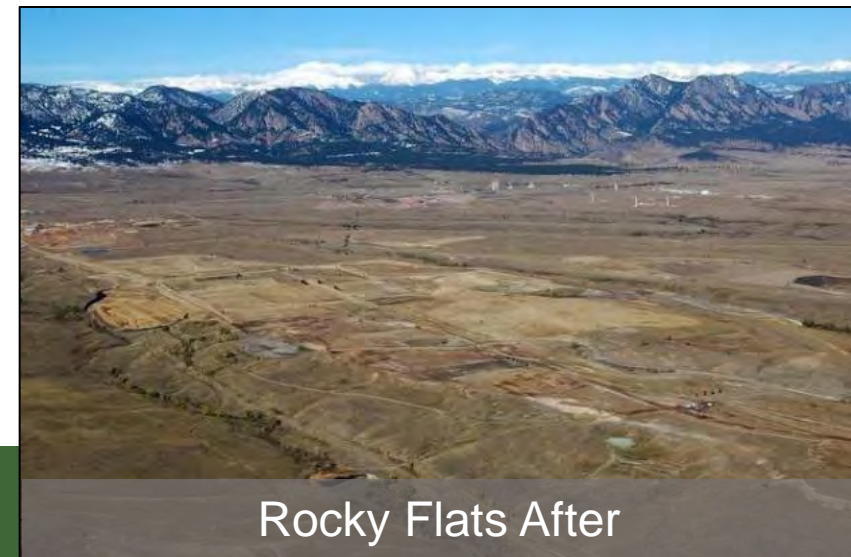
Permit Changes

- Prioritizing legacy waste clean-up and disposal at WIPP, including LANL
- Legacy TRU Waste Disposal Plan developed
- Requiring DOE to report progress on siting another repository
- Reporting oil, gas and saltwater disposal operations within one mile of WIPP facility
- Enhanced public participation



Accomplishments

- Total shipments received: **13,688**
- Total loaded miles traveled: **16,377,038**
- Total contact-handled waste containers emplaced: **278,672**
- Total remote-handled waste canisters emplaced: **775**
 - Shielded containers emplaced: **56**
- DOE sites cleaned up of all legacy TRU waste: **22**



As of 10/09/2023



Questions

